

For Research Use Only

TIP30 Recombinant monoclonal antibody, PBS Only (Detector)

Catalog Number: 86972-1-PBS



Basic Information

Catalog Number: 86972-1-PBS	GenBank Accession Number: BC002439	Purification Method: Protein A purification
Size: 100ug, Concentration: 1 mg/ml by Nanodrop;	GeneID (NCBI): 10553	CloneNo.: 252091A12
Source: Rabbit	UNIPROT ID: Q9BUP3	
Isotype: IgG	Full Name: HIV-1 Tat interactive protein 2, 30kDa	
Immunogen Catalog Number: AG0353	Calculated MW: 27 kDa	
	Observed MW: 28 kDa, 32 kDa	

Applications

Tested Applications:
WB, Cytometric bead array, Indirect ELISA

Species Specificity:
human

Product Information

86972-1-PBS targets TIP30 as part of a matched antibody pair:

MP02818-1: 86972-2-PBS capture and 86972-1-PBS detection (validated in Cytometric bead array)

Unconjugated rabbit recombinant monoclonal antibody in PBS only (BSA and azide free) storage buffer at a concentration of 1 mg/mL, ready for conjugation. Created using Proteintech's proprietary in-house recombinant technology. Recombinant production enables unrivalled batch-to-batch consistency, easy scale-up, and future security of supply.

This conjugation ready format makes antibodies ideal for use in many applications including: ELISAs, multiplex assays requiring matched pairs, mass cytometry, and multiplex imaging applications. Antibody use should be optimized by the end user for each application and assay.

Background Information

TIP30, namely HTATIP2 or CC3, was firstly discovered in small cell lung carcinoma, using differential analyses between highly metastatic human variant cells and less metastatic classic cells. TIP30 was found to be downregulated in various tumors and is considered to be a tumor suppressor due to its pro-apoptotic activity and its anti-metastatic and anti-angiogenic capacities.

Storage

Storage:
Store at -80°C.

Storage Buffer:
PBS only, pH7.3

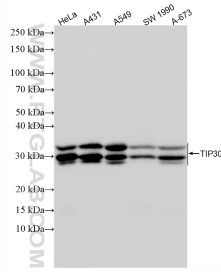
For technical support and original validation data for this product please contact:

T: 1 (888) 4PTGLAB (1-888-478-4522) (toll free in USA), or 1(312) 455-8498 (outside USA)

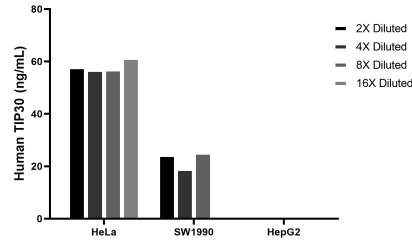
E: proteintech@ptglab.com
W: ptglab.com

This product is exclusively available under Proteintech Group brand and is not available to purchase from any other manufacturer.

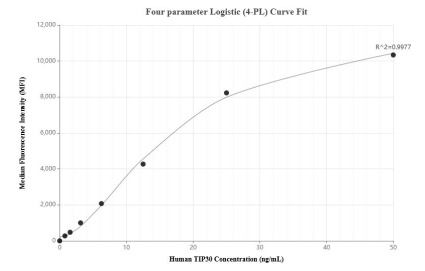
Selected Validation Data



Various lysates were subjected to SDS PAGE followed by western blot with 86972-1-RR (TIP30 antibody) at dilution of 1:10000 incubated at room temperature for 1.5 hours. This data was developed using the same antibody clone with 86972-1-PBS in a different storage buffer formulation.



The mean TIP30 concentration was determined to be 58.3 ng/mL in HeLa cell extract based on a 1.2 mg/mL extract load, 22.8 ng/mL in SW1990 cell extract based on a 1.8 mg/mL extract load, HepG2 cell extract were served as a negative control.



Cytometric bead array standard curve of MP02818-1, TIP30 Recombinant Matched Antibody Pair, PBS Only. Capture antibody: 86972-2-PBS. Detection antibody: 86972-1-PBS. Standard: Ag0353. Range: 0.781-50 ng/mL.