

For Research Use Only

# REG3A Recombinant monoclonal antibody, PBS Only (Detector)

Catalog Number: 86976-1-PBS



## Basic Information

<b>Catalog Number:</b> 86976-1-PBS	<b>GenBank Accession Number:</b> NM_002580.2	<b>Purification Method:</b> Protein A purification
<b>Size:</b> 100ug , Concentration: 1 mg/ml by Nanodrop;	<b>GeneID (NCBI):</b> 5068	<b>CloneNo.:</b> 251991G5
<b>Source:</b> Rabbit	<b>UNIPROT ID:</b> Q06141	
<b>Isotype:</b> IgG	<b>Full Name:</b> regenerating islet-derived 3 alpha	
<b>Immunogen Catalog Number:</b> EG2893	<b>Calculated MW:</b> 19 kDa	

## Applications

**Tested Applications:**  
Cytometric bead array, Sandwich ELISA, Indirect ELISA

**Species Specificity:**  
human

## Product Information

86976-1-PBS targets REG3A as part of a matched antibody pair:

MP02800-1: 86976-2-PBS capture and 86976-1-PBS detection (validated in Cytometric bead array, Sandwich ELISA)

Unconjugated rabbit recombinant monoclonal antibody in PBS only (BSA and azide free) storage buffer at a concentration of 1 mg/mL, ready for conjugation. Created using Proteintech's proprietary in-house recombinant technology. Recombinant production enables unrivalled batch-to-batch consistency, easy scale-up, and future security of supply.

This conjugation ready format makes antibodies ideal for use in many applications including: ELISAs, multiplex assays requiring matched pairs, mass cytometry, and multiplex imaging applications. Antibody use should be optimized by the end user for each application and assay.

## Storage

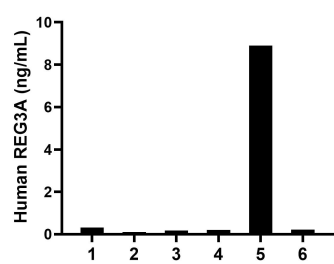
**Storage:**  
Store at -80°C.

**Storage Buffer:**  
PBS only, pH7.3

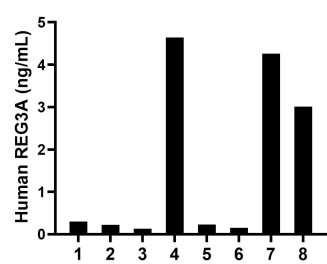
For technical support and original validation data for this product please contact:  
T: 1 (888) 4PTGLAB (1-888-478-4522) (toll free in USA), or 1(312) 455-8498 (outside USA)  
E: [proteintech@ptglab.com](mailto:proteintech@ptglab.com)  
W: [ptglab.com](http://ptglab.com)

This product is exclusively available under Proteintech Group brand and is not available to purchase from any other manufacturer.

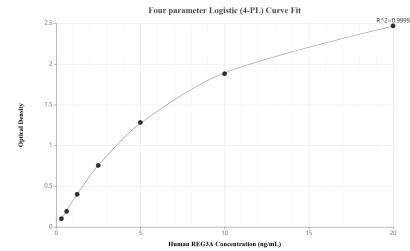
Selected Validation Data



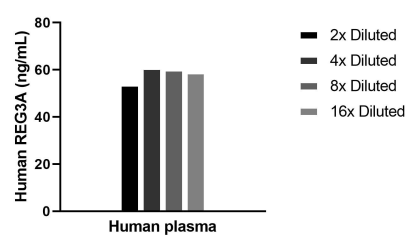
Serum of six individual healthy human donors was measured. The REG3A concentration of detected samples was determined to be 1.66 ng/mL with a range of 0.10-8.90 ng/mL.



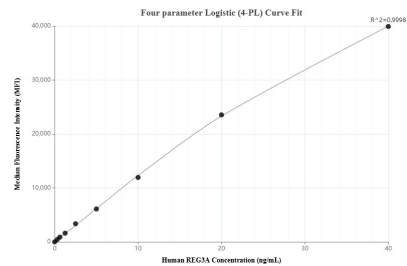
Plasma of eight individual healthy human donors was measured. The REG3A concentration of detected samples was determined to be 1.62 ng/mL with a range of 0.15-4.64 ng/mL.



Sandwich ELISA standard curve of MP02800-1, Human REG3A Recombinant Matched Antibody Pair - PBS only. 86976-2-PBS was coated to a plate as the capture antibody and incubated with serial dilutions of standard Eg2893. 86976-1-PBS was HRP conjugated as the detection antibody. Range: 0.313-20 ng/mL.



The mean REG3A concentration was determined to be 58.3 ng/mL in human plasma.



Cytometric bead array standard curve of MP02800-1, REG3A Recombinant Matched Antibody Pair, PBS Only. Capture antibody: 86976-2-PBS. Detection antibody: 86976-1-PBS. Standard: Eg2893. Range: 0.312-40 ng/mL.