

For Research Use Only

FAM160B1 Recombinant monoclonal antibody

Catalog Number: 86980-1-RR



Basic Information

Catalog Number: 86980-1-RR	GenBank Accession Number: BC037207	Purification Method: Protein A purification
Size: 100ul , Concentration: 1000 µg/ml by Nanodrop;	GeneID (NCBI): 57700	CloneNo.: 252114F7
Source: Rabbit	UNIPROT ID: Q5W0V3	Recommended Dilutions: WB: 1:2000-1:10000
Isotype: IgG	Full Name: family with sequence similarity 160, member B1	
Immunogen Catalog Number: AG22051	Calculated MW: 765 aa, 86 kDa	
	Observed MW: 100, 130 kDa	

Applications

Tested Applications: WB, ELISA	Positive Controls: WB : human testis tissue, PC-3 cells
Species Specificity: human	

Background Information

FAM160B1, also named as KIAA1600, is a 765 amino acid protein, which belongs to the UPF0518 family. The biological function of FAM160B1 is still non-known. FAM160B1 exists as two isoforms and the molecular weight of isoform one is a 86 kDa protein. The isoform two is produced by alternative splicing and is a 83 kDa protein. There are modified residues of FAM160B1 protein, so we detected 95 kDa and 100 kDa two bands by western blotting.

Storage

Storage:
Store at -20°C. Stable for one year after shipment.
Storage Buffer:
PBS with 0.02% sodium azide and 50% glycerol, pH7.3
Aliquoting is unnecessary for -20°C storage

*** 20ul sizes contain 0.1% BSA

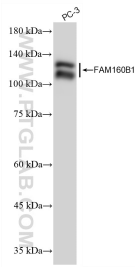
For technical support and original validation data for this product please contact:

T: 1 (888) 4PTGLAB (1-888-478-4522) (toll free in USA), or 1(312) 455-8498 (outside USA)

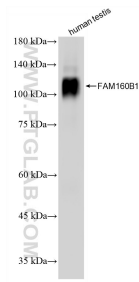
E: proteintech@ptglab.com
W: ptglab.com

This product is exclusively available under Proteintech Group brand and is not available to purchase from any other manufacturer.

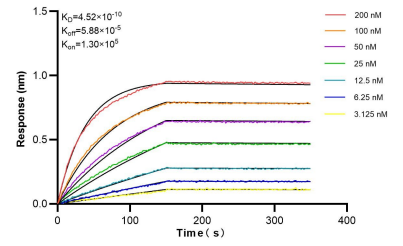
Selected Validation Data



PC-3 cells were subjected to SDS PAGE followed by western blot with 86980-1-RR (FAM160B1 antibody) at dilution of 1:5000 incubated at room temperature for 1.5 hours.



human testis tissue were subjected to SDS PAGE followed by western blot with 86980-1-RR (FAM160B1 antibody) at dilution of 1:5000 incubated at room temperature for 1.5 hours.



Biolayer interferometry (BLI) kinetic assays of 86980-1-RR against Human FAM160B1 were performed. The affinity constant is 0.452 nM.