

For Research Use Only

Mono/Di-Methyl-Histone H3 (Lys9) Recombinant monoclonal antibody

Catalog Number:86990-1-RR



Basic Information

Catalog Number: 86990-1-RR	GenBank Accession Number: BC066245	Purification Method: Protein A purification
Size: 100ul , Concentration: 1000 µg/ml by Nanodrop;	GeneID (NCBI): 8350	CloneNo.: 252046D9
Source: Rabbit	UNIPROT ID: P68431	Recommended Dilutions: WB: 1:1000-1:4000 IF/ICC: 1:250-1:1000 Dot Blot: 1:10-1:100 ChIP-qPCR: 1:10-1:100
Isotype: IgG	Full Name: histone cluster 1, H3a Observed MW: 17 kDa	

Applications

Tested Applications:
WB, IF/ICC, Dot Blot, ELISA, ChIP-qPCR

Species Specificity:
human, mouse, rat

Positive Controls:

WB : HeLa cells, HEK-293T cells, K-562 cells, MCF-7 cells, NIH/3T3 cells, HSC-T6 cells, mouse liver tissue

IF/ICC : C6 cells, NIH/3T3 cells, HeLa cells

Dot Blot : / /

ChIP-qPCR : HeLa cells,

Storage

Storage:
Store at -20°C. Stable for one year after shipment.

Storage Buffer:
PBS with 0.02% sodium azide and 50% glycerol, pH7.3

Aliquoting is unnecessary for -20°C storage

*** 20ul sizes contain 0.1% BSA

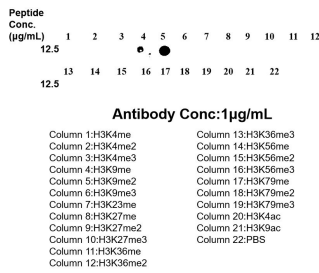
For technical support and original validation data for this product please contact:

T: 1 (888) 4PTGLAB (1-888-478-4522) (toll free
in USA), or 1(312) 455-8498 (outside USA)

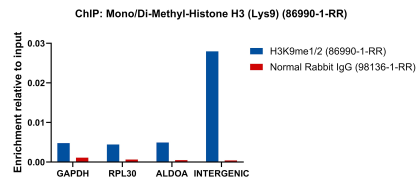
E: proteintech@ptglab.com
W: ptglab.com

This product is exclusively available under Proteintech Group brand and is not available to purchase from any other manufacturer.

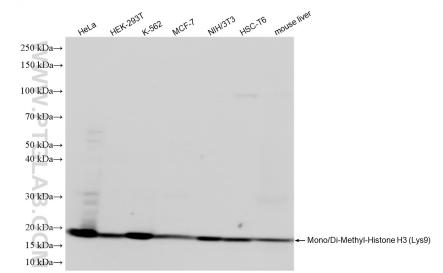
Selected Validation Data



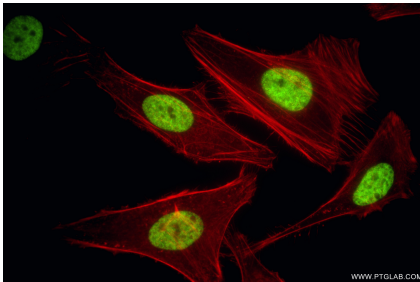
Dot blot analysis was used to confirm the specificity of 86990-1-RR Mono/Di-Methyl-Histone H3 (Lys9) antibody. peptides were spotted onto NC and probed with antibody at 1 µg/ml. The amount of peptide (µg/ml) spotted is indicated next to each row.



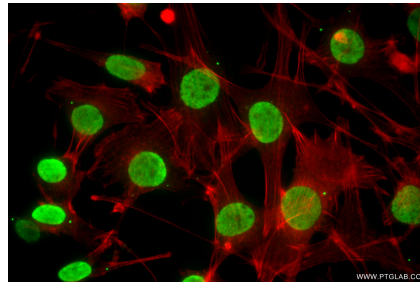
Chromatin was prepared from HeLa cells. Cells were fixed with formaldehyde for 10 minutes. The ChIP was performed with 15 µg of cross-linked chromatin, 5 µg of Mono/Di-Methyl-Histone H3 (Lys9) (86990-1-RR) or 5 µg of Normal Rabbit IgG (98136-1-RR), and 20 µl of Protein A Magarose Beads. The immunoprecipitated DNA was quantified by real-time PCR.



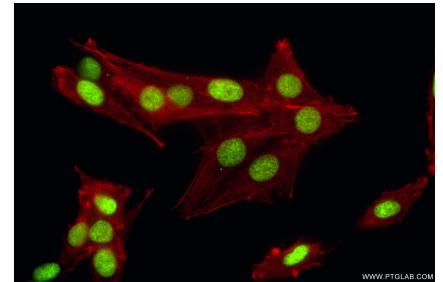
Various lysates were subjected to SDS PAGE followed by western blot with 86990-1-RR (Mono/Di-Methyl-Histone H3 (Lys9) antibody) at dilution of 1:2000 incubated at room temperature for 1.5 hours.



Immunofluorescent analysis of (4% PFA) fixed HeLa cells using Mono/Di-Methyl-Histone H3 (Lys9) antibody (86990-1-RR, Clone: 252046D9) at dilution of 1:500 and CoralLite®488-Conjugated Goat Anti-Rabbit IgG(H+L) (SA00013-2), CL594-Phalloidin (red).



Immunofluorescent analysis of (4% PFA) fixed NIH/3T3 cells using Mono/Di-Methyl-Histone H3 (Lys9) antibody (86990-1-RR, Clone: 252046D9) at dilution of 1:500 and CoralLite®488-Conjugated Goat Anti-Rabbit IgG(H+L) (SA00013-2), CL594-Phalloidin (red).



Immunofluorescent analysis of (4% PFA) fixed C6 cells using Mono/Di-Methyl-Histone H3 (Lys9) antibody (86990-1-RR, Clone: 252046D9) at dilution of 1:500 and CoralLite®488-Conjugated Goat Anti-Rabbit IgG(H+L) (SA00013-2), CL594-Phalloidin (red).