

For Research Use Only

# KRR1 Recombinant monoclonal antibody, PBS Only

Catalog Number: 86993-3-PBS



## Basic Information

<b>Catalog Number:</b> 86993-3-PBS	<b>GenBank Accession Number:</b> BC026107	<b>Purification Method:</b> Protein A purification
<b>Size:</b> 100ug, Concentration: 1 mg/ml by Nanodrop;	<b>GeneID (NCBI):</b> 11103	<b>CloneNo.:</b> 252034F1
<b>Source:</b> Rabbit	<b>UNIPROT ID:</b> Q13601	
<b>Isotype:</b> IgG	<b>Full Name:</b> KRR1, small subunit (SSU) processome component, homolog (yeast)	
<b>Immunogen Catalog Number:</b> AG3464	<b>Calculated MW:</b> 381 aa, 44 kDa	
	<b>Observed MW:</b> 46 kDa	

## Applications

**Tested Applications:**  
WB, IF/ICC, Indirect ELISA

**Species Specificity:**  
human, mouse, rat

## Background Information

KRR1 (also known as RIP-1) is a key assembly factor in the biogenesis of 40S precursor ribosomes (90S). As a rate-limiting node in ribosome biogenesis, its expression level reflects overall ribosome production activity.

## Storage

**Storage:**  
Store at -80°C.

**Storage Buffer:**  
PBS only, pH7.3

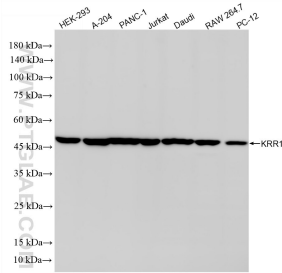
For technical support and original validation data for this product please contact:

T: 1 (888) 4PTGLAB (1-888-478-4522) (toll free in USA), or 1(312) 455-8498 (outside USA)

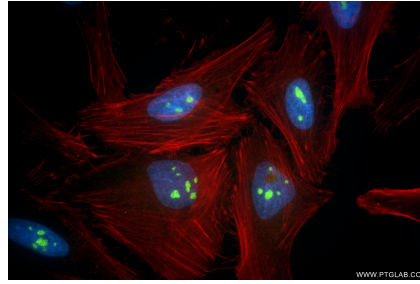
E: [proteintech@ptglab.com](mailto:proteintech@ptglab.com)  
W: [ptglab.com](http://ptglab.com)

**This product is exclusively available under Proteintech Group brand and is not available to purchase from any other manufacturer.**

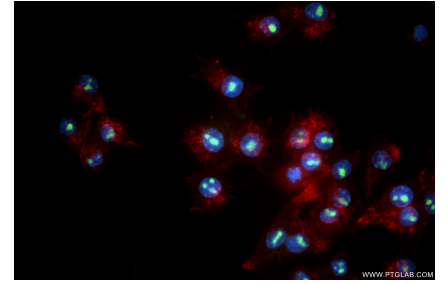
## Selected Validation Data



Various lysates were subjected to SDS PAGE followed by western blot with 86993-3-RR (KRR1 antibody) at dilution of 1:10000 incubated at room temperature for 1.5 hours. This data was developed using the same antibody clone with 86993-3-PBS in a different storage buffer formulation.



Immunofluorescent analysis of (4% PFA) fixed HeLa cells using KRR1 antibody (86993-3-RR, Clone: 252034F1) at dilution of 1:1000 and CoraLite®488-Conjugated Goat Anti-Rabbit IgG(H+L) (SA00013-2), CL594-Phalloidin (red). This data was developed using the same antibody clone with 86993-3-PBS in a different storage buffer formulation.



Immunofluorescent analysis of (4% PFA) fixed RAW 264.7 cells using KRR1 antibody (86993-3-RR, Clone: 252034F1) at dilution of 1:1000 and CoraLite®488-Conjugated Goat Anti-Rabbit IgG(H+L) (SA00013-2), CL594-Phalloidin (red). This data was developed using the same antibody clone with 86993-3-PBS in a different storage buffer formulation.