

For Research Use Only

KRR1 Recombinant monoclonal antibody

Catalog Number: 86993-3-RR



Basic Information

Catalog Number: 86993-3-RR	GenBank Accession Number: BC026107	Purification Method: Protein A purification
Size: 100ul , Concentration: 1000 µg/ml by Nanodrop;	GeneID (NCBI): 11103	CloneNo.: 252034F1
Source: Rabbit	UNIPROT ID: Q13601	Recommended Dilutions: WB: 1:5000-1:50000 IF/ICC: 1:500-1:2000
Isotype: IgG	Full Name: KRR1, small subunit (SSU) processome component, homolog (yeast)	
Immunogen Catalog Number: AG3464	Calculated MW: 381 aa, 44 kDa	
	Observed MW: 46 kDa	

Applications

Tested Applications:
WB, IF/ICC, ELISA

Species Specificity:
human, mouse, rat

Positive Controls:

WB : HEK-293 cells, A-204 cells, PANC-1 cells, Jurkat cells, Daudi cells, RAW 264.7 cells, PC-12 cells

IF/ICC : RAW 264.7 cells, HeLa cells

Background Information

KRR1 (also known as RIP-1) is a key assembly factor in the biogenesis of 40S precursor ribosomes (90S). As a rate-limiting node in ribosome biogenesis, its expression level reflects overall ribosome production activity.

Storage

Storage:
Store at -20°C. Stable for one year after shipment.

Storage Buffer:
PBS with 0.02% sodium azide and 50% glycerol, pH7.3

Aliquoting is unnecessary for -20°C storage

*** 20ul sizes contain 0.1% BSA

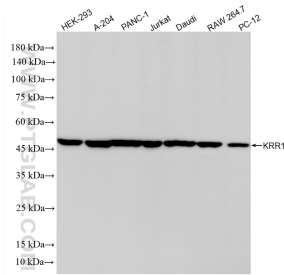
For technical support and original validation data for this product please contact:

T: 1 (888) 4PTGLAB (1-888-478-4522) (toll free in USA), or 1(312) 455-8498 (outside USA)

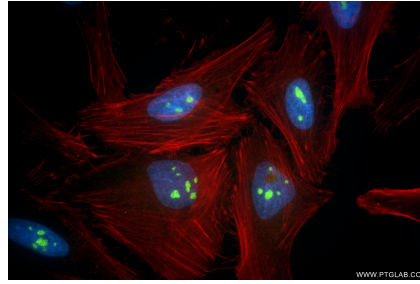
E: proteintech@ptglab.com
W: ptglab.com

This product is exclusively available under Proteintech Group brand and is not available to purchase from any other manufacturer.

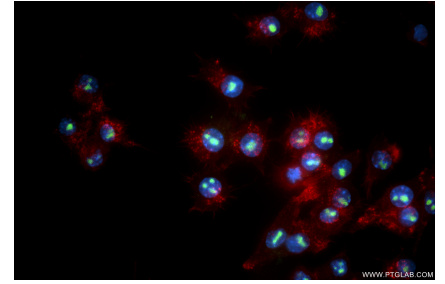
Selected Validation Data



Various lysates were subjected to SDS PAGE followed by western blot with 86993-3-RR (KRR1 antibody) at dilution of 1:10000 incubated at room temperature for 1.5 hours.



Immunofluorescent analysis of (4% PFA) fixed HeLa cells using KRR1 antibody (86993-3-RR, Clone: 252034F1) at dilution of 1:1000 and CoraLite®488-Conjugated Goat Anti-Rabbit IgG(H+L) (SA00013-2), CL594-Phalloidin (red).



Immunofluorescent analysis of (4% PFA) fixed RAW 264.7 cells using KRR1 antibody (86993-3-RR, Clone: 252034F1) at dilution of 1:1000 and CoraLite®488-Conjugated Goat Anti-Rabbit IgG(H+L) (SA00013-2), CL594-Phalloidin (red).