

For Research Use Only

# KRR1 Recombinant monoclonal antibody, PBS Only (Detector)

Catalog Number:86993-4-PBS



## Basic Information

<b>Catalog Number:</b> 86993-4-PBS	<b>GenBank Accession Number:</b> BC026107	<b>Purification Method:</b> Protein A purification
<b>Size:</b> 100ug , Concentration: 1 mg/ml by Nanodrop;	<b>GeneID (NCBI):</b> 11103	<b>CloneNo.:</b> 252034G4
<b>Source:</b> Rabbit	<b>UNIPROT ID:</b> Q13601	
<b>Isotype:</b> IgG	<b>Full Name:</b> KRR1, small subunit (SSU) processome component, homolog (yeast)	
<b>Immunogen Catalog Number:</b> AG3464	<b>Calculated MW:</b> 381 aa, 44 kDa	

## Applications

**Tested Applications:**  
Sandwich ELISA, Indirect ELISA

**Species Specificity:**  
human

## Product Information

86993-4-PBS targets KRR1 as part of a matched antibody pair:

MP02819-2: 86993-2-PBS capture and 86993-4-PBS detection (validated in Sandwich ELISA)

Unconjugated rabbit recombinant monoclonal antibody in PBS only (BSA and azide free) storage buffer at a concentration of 1 mg/mL, ready for conjugation. Created using Proteintech's proprietary in-house recombinant technology. Recombinant production enables unrivalled batch-to-batch consistency, easy scale-up, and future security of supply.

This conjugation ready format makes antibodies ideal for use in many applications including: ELISAs, multiplex assays requiring matched pairs, mass cytometry, and multiplex imaging applications. Antibody use should be optimized by the end user for each application and assay.

## Storage

**Storage:**  
Store at -80°C.

**Storage Buffer:**  
PBS only, pH7.3

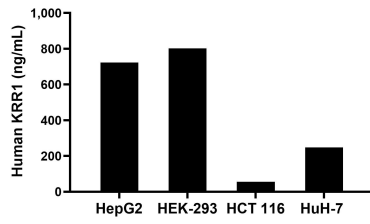
For technical support and original validation data for this product please contact:

T: 1 (888) 4PTGLAB (1-888-478-4522) (toll free in USA), or 1(312) 455-8498 (outside USA)

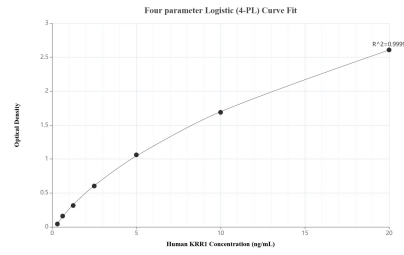
E: [proteintech@ptglab.com](mailto:proteintech@ptglab.com)  
W: [ptglab.com](http://ptglab.com)

**This product is exclusively available under Proteintech Group brand and is not available to purchase from any other manufacturer.**

## Selected Validation Data



The mean KRR1 concentration was determined to be 722.68 ng/mL in HepG2 cell extract based on a 1.20 mg/mL extract load, 802.60 ng/mL in HEK-293 cell extract based on a 1.20 mg/mL extract load, 56.10 ng/mL in HCT 116 cell extract based on a 1.20 mg/mL extract load and 247.22 ng/mL in HuH-7 cell extract based on a 1.20 mg/mL extract load.



Sandwich ELISA standard curve of MP02819-2, Human KRR1 Recombinant Matched Antibody Pair - PBS only. 86993-2-PBS was coated to a plate as the capture antibody and incubated with serial dilutions of standard Ag3464. 86993-4-PBS was HRP conjugated as the detection antibody. Range: 0.313-20 ng/mL.