

For Research Use Only

PRKCSH Recombinant monoclonal antibody, PBS Only

Catalog Number: 87004-3-PBS



Basic Information

Catalog Number: 87004-3-PBS	GenBank Accession Number: BC013586	Purification Method: Protein A purification
Size: 100ug, Concentration: 1 mg/ml by Nanodrop;	GeneID (NCBI): 5589	CloneNo.: 252090C1
Source: Rabbit	UNIPROT ID: P14314	
Isotype: IgG	Full Name: protein kinase C substrate 80K-H	
Immunogen Catalog Number: AG2796	Calculated MW: 80 kDa	
	Observed MW: 80 kDa	

Applications

Tested Applications:
WB, Indirect ELISA

Species Specificity:
human, rat

Background Information

PRKCSH encodes the beta-subunit of glucosidase II, an N-linked glycan-processing enzyme in the endoplasmic reticulum (ER). This protein is an acidic phospho-protein known to be a substrate for protein kinase C. Defects in PRKCSH are a cause of an autosomal dominant polycystic liver disease (PCLD). Glucosidase II is an ER-localized enzyme that contains α and β subunits (Glucosidase II α and Glucosidase II β) which form a defined heterodimeric complex.

Storage

Storage:
Store at -80°C.

Storage Buffer:
PBS only, pH7.3

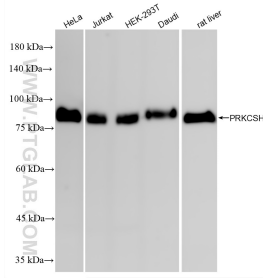
For technical support and original validation data for this product please contact:

T: 1 (888) 4PTGLAB (1-888-478-4522) (toll free in USA), or 1(312) 455-8498 (outside USA)

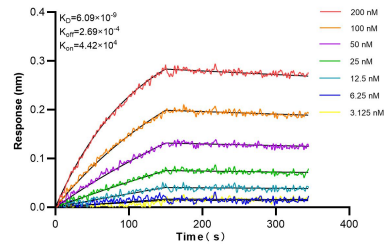
E: proteintech@ptglab.com
W: ptglab.com

This product is exclusively available under Proteintech Group brand and is not available to purchase from any other manufacturer.

Selected Validation Data



Various lysates were subjected to SDS PAGE followed by western blot with 87004-3-RR (PRKCSH antibody) at dilution of 1:10000 incubated at room temperature for 1.5 hours. This data was developed using the same antibody clone with 87004-3-PBS in a different storage buffer formulation.



Biolayer interferometry (BLI) kinetic assays of 87004-3-RR against Human PRKCSH were performed. The affinity constant is 6.09 nM.