

For Research Use Only

# PRKCSH Recombinant monoclonal antibody

Catalog Number: 87004-3-RR



## Basic Information

<b>Catalog Number:</b> 87004-3-RR	<b>GenBank Accession Number:</b> BC013586	<b>Purification Method:</b> Protein A purification
<b>Size:</b> 100ul , Concentration: 1000 µg/ml by Nanodrop;	<b>GeneID (NCBI):</b> 5589	<b>CloneNo.:</b> 252090C1
<b>Source:</b> Rabbit	<b>UNIPROT ID:</b> P14314	<b>Recommended Dilutions:</b> WB: 1:5000-1:50000
<b>Isotype:</b> IgG	<b>Full Name:</b> protein kinase C substrate 80K-H	
<b>Immunogen Catalog Number:</b> AG2796	<b>Calculated MW:</b> 80 kDa	
	<b>Observed MW:</b> 80 kDa	

## Applications

**Tested Applications:**  
WB, ELISA

**Species Specificity:**  
human, rat

**Positive Controls:**  
WB : HeLa cells, Jurkat cells, HEK-293T cells, Daudi cells, rat liver tissue

## Background Information

PRKCSH encodes the beta-subunit of glucosidase II, an N-linked glycan-processing enzyme in the endoplasmic reticulum (ER). This protein is an acidic phospho-protein known to be a substrate for protein kinase C. Defects in PRKCSH are a cause of an autosomal dominant polycystic liver disease (PCLD). Glucosidase II is an ER-localized enzyme that contains  $\alpha$  and  $\beta$  subunits (Glucosidase II $\alpha$  and Glucosidase II $\beta$ ) which form a defined heterodimeric complex.

## Storage

**Storage:**  
Store at -20°C. Stable for one year after shipment.

**Storage Buffer:**  
PBS with 0.02% sodium azide and 50% glycerol, pH7.3

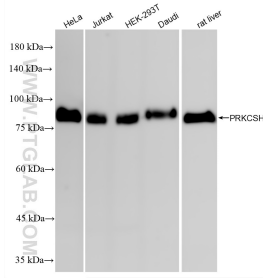
Aliquoting is unnecessary for -20°C storage

\*\*\* 20ul sizes contain 0.1% BSA

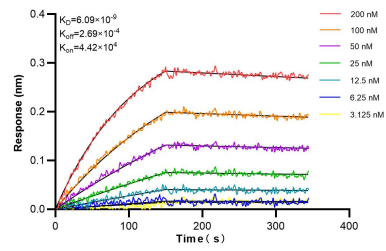
For technical support and original validation data for this product please contact:  
T: 1 (888) 4PTGLAB (1-888-478-4522) (toll free in USA), or 1(312) 455-8498 (outside USA)  
E: proteintech@ptglab.com  
W: ptglab.com

This product is exclusively available under Proteintech Group brand and is not available to purchase from any other manufacturer.

## Selected Validation Data



Various lysates were subjected to SDS PAGE followed by western blot with 87004-3-RR (PRKCSH antibody) at dilution of 1:10000 incubated at room temperature for 1.5 hours.



Biolayer interferometry (BLI) kinetic assays of 87004-3-RR against Human PRKCSH were performed. The affinity constant is 6.09 nM.