

For Research Use Only

# Di-Methyl-Histone H4 (Lys20) Recombinant monoclonal antibody, PBS Only



Catalog Number: 87006-1-PBS

## Basic Information

<b>Catalog Number:</b> 87006-1-PBS	<b>GenBank Accession Number:</b> BC069654	<b>Purification Method:</b> Protein A purification
<b>Size:</b> 100ug, Concentration: 1 mg/ml by Nanodrop;	<b>GeneID (NCBI):</b> 8359	<b>CloneNo.:</b> 251934G9
<b>Source:</b> Rabbit	<b>UNIPROT ID:</b> P62805	
<b>Isotype:</b> IgG	<b>Full Name:</b> histone cluster 1, H4a	
	<b>Observed MW:</b> 15 kDa	

## Applications

**Tested Applications:**  
WB, IHC, IF/ICC, Dot Blot, Indirect ELISA

**Species Specificity:**  
human, mouse, rat

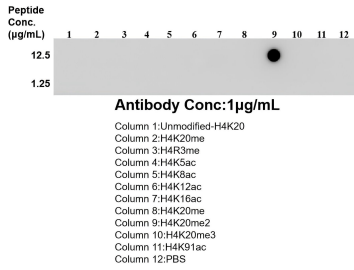
## Storage

**Storage:**  
Store at -80°C.  
**Storage Buffer:**  
PBS only, pH7.3

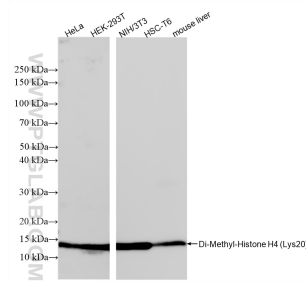
For technical support and original validation data for this product please contact:  
T: 1 (888) 4PTGLAB (1-888-478-4522) (toll free in USA), or 1(312) 455-8498 (outside USA)      E: [proteintech@ptglab.com](mailto:proteintech@ptglab.com)  
W: [ptglab.com](http://ptglab.com)

This product is exclusively available under Proteintech Group brand and is not available to purchase from any other manufacturer.

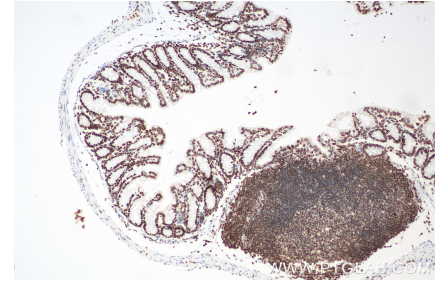
## Selected Validation Data



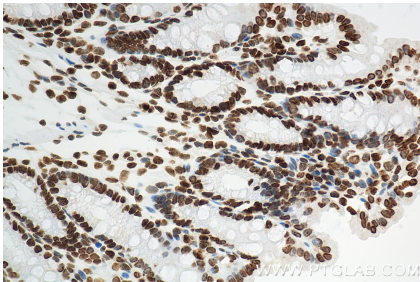
Dot blot analysis was used to confirm the specificity of 86990-2-RR Di-Methyl-Histone H4 (Lys20) antibody. peptides were spotted onto NC and probed with antibody at 1 µg/ml. The amount of peptide (µg/mL) spotted is indicated next to each row. This data was developed using the same antibody clone with 87006-1-PBS in a different storage buffer formulation.



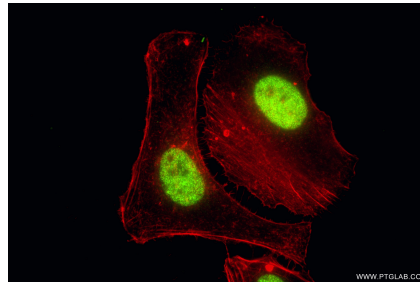
Various lysates were subjected to SDS PAGE followed by western blot with 87006-1-RR (Di-Methyl-Histone H4 (Lys20) antibody) at dilution of 1:5000 incubated at room temperature for 1.5 hours. This data was developed using the same antibody clone with 87006-1-PBS in a different storage buffer formulation.



Immunohistochemical analysis of paraffin-embedded mouse colon tissue slide using 87006-1-RR (Di-Methyl-Histone H4 (Lys20) antibody) at dilution of 1:1000 (under 10x lens). Heat mediated antigen retrieval with Tris-EDTA buffer (pH 9.0). This data was developed using the same antibody clone with 87006-1-PBS in a different storage buffer formulation.



Immunohistochemical analysis of paraffin-embedded mouse colon tissue slide using 87006-1-RR (Di-Methyl-Histone H4 (Lys20) antibody) at dilution of 1:1000 (under 40x lens). Heat mediated antigen retrieval with Tris-EDTA buffer (pH 9.0). This data was developed using the same antibody clone with 87006-1-PBS in a different storage buffer formulation.



Immunofluorescent analysis of (4% PFA) fixed HeLa cells using Di-Methyl-Histone H4 (Lys20) antibody (87006-1-RR, Clone: 251934G9) at dilution of 1:1000 and CoraLite@488-Conjugated Goat Anti-Rabbit IgG(H+L) (SA00013-2), CL594-Phalloidin (red). This data was developed using the same antibody clone with 87006-1-PBS in a different storage buffer formulation.