

For Research Use Only

Di-Methyl-Histone H4 (Lys20) Recombinant monoclonal antibody

Catalog Number:87006-1-RR



Basic Information

Catalog Number: 87006-1-RR	GenBank Accession Number: BC069654	Purification Method: Protein A purification
Size: 100ul , Concentration: 1000 µg/ml by Nanodrop;	GeneID (NCBI): 8359	CloneNo.: 251934G9
Source: Rabbit	UNIPROT ID: P62805	Recommended Dilutions: WB: 1:2000-1:10000 IHC: 1:500-1:2000
Isotype: IgG	Full Name: histone cluster 1, H4a	IF/ICC: 1:500-1:2000 Dot Blot: 1:10-1:100
	Observed MW: 15 kDa	

Applications

Tested Applications:
WB, IHC, IF/ICC, Dot Blot, ELISA

Species Specificity:
human, mouse, rat

**Note-IHC: suggested antigen retrieval with
TE buffer pH 9.0; (*) Alternatively, antigen
retrieval may be performed with citrate
buffer pH 6.0**

Positive Controls:

WB : HeLa cells, HEK-293T cells, NIH/3T3 cells, HSC-T6
cells, mouse liver tissue

IHC : mouse colon tissue,

IF/ICC : HeLa cells,

Dot Blot: / / ,

Storage

Storage:
Store at -20°C. Stable for one year after shipment.
Storage Buffer:
PBS with 0.02% sodium azide and 50% glycerol, pH7.3
Aliquoting is unnecessary for -20°C storage

*** 20ul sizes contain 0.1% BSA

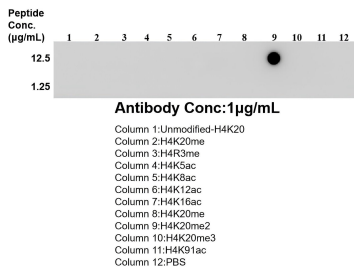
For technical support and original validation data for this product please contact:

T: 1 (888) 4PTGLAB (1-888-478-4522) (toll free
in USA), or 1(312) 455-8498 (outside USA)

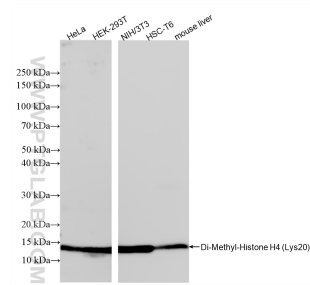
E: proteintech@ptglab.com
W: ptglab.com

This product is exclusively available under Proteintech
Group brand and is not available to purchase from any
other manufacturer.

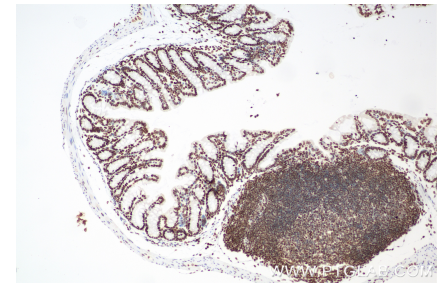
Selected Validation Data



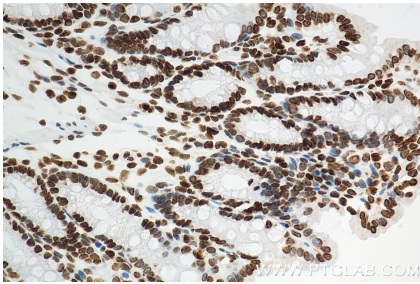
Dot blot analysis was used to confirm the specificity of 86990-2-RR Di-Methyl-Histone H4 (Lys20) antibody. peptides were spotted onto NC and probed with antibody at 1 µg/ml. The amount of peptide (µg/mL) spotted is indicated next to each row.



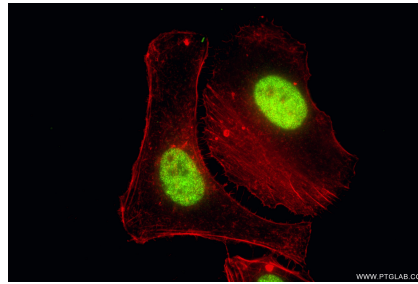
Various lysates were subjected to SDS PAGE followed by western blot with 87006-1-RR (Di-Methyl-Histone H4 (Lys20) antibody) at dilution of 1:5000 incubated at room temperature for 1.5 hours.



Immunohistochemical analysis of paraffin-embedded mouse colon tissue slide using 87006-1-RR (Di-Methyl-Histone H4 (Lys20) antibody) at dilution of 1:1000 (under 10x lens). Heat mediated antigen retrieval with Tris-EDTA buffer (pH 9.0).



Immunohistochemical analysis of paraffin-embedded mouse colon tissue slide using 87006-1-RR (Di-Methyl-Histone H4 (Lys20) antibody) at dilution of 1:1000 (under 40x lens). Heat mediated antigen retrieval with Tris-EDTA buffer (pH 9.0).



Immunofluorescent analysis of (4% PFA) fixed HeLa cells using Di-Methyl-Histone H4 (Lys20) antibody (87006-1-RR, Clone: 251934G9) at dilution of 1:1000 and CoraLite®488-Conjugated Goat Anti-Rabbit IgG(H+L) (SA00013-2), CL594-Phalloidin (red).