

For Research Use Only

ELK1 Recombinant monoclonal antibody, PBS Only (Detector)

Catalog Number: 87009-2-PBS



Basic Information

Catalog Number: 87009-2-PBS	GenBank Accession Number: BC056150	Purification Method: Protein A purification
Size: 100ug, Concentration: 1 mg/ml by Nanodrop;	GeneID (NCBI): 2002	CloneNo.: 252085B2
Source: Rabbit	UNIPROT ID: P19419	
Isotype: IgG	Full Name: ELK1, member of ETS oncogene family	
Immunogen Catalog Number: AG26683	Calculated MW: 45 kDa	
	Observed MW: 58-60 kDa	

Applications

Tested Applications:
WB, IF/ICC, Sandwich ELISA, Indirect ELISA

Species Specificity:
human

Product Information

87009-2-PBS targets ELK1 as part of a matched antibody pair:

MP02998-1: 87009-1-PBS capture and 87009-2-PBS detection (validated in Sandwich ELISA)

Unconjugated rabbit recombinant monoclonal antibody in PBS only (BSA and azide free) storage buffer at a concentration of 1 mg/mL, ready for conjugation. Created using Proteintech's proprietary in-house recombinant technology. Recombinant production enables unrivalled batch-to-batch consistency, easy scale-up, and future security of supply.

This conjugation ready format makes antibodies ideal for use in many applications including: ELISAs, multiplex assays requiring matched pairs, mass cytometry, and multiplex imaging applications. Antibody use should be optimized by the end user for each application and assay.

Background Information

ELK1 is a nuclear transcription factor of the ETS-domain family and the ternary complex factor (TCF) sub-family. It binds to purine-rich DNA sequences and forms a ternary complex with serum response factor (SRF) on the serum response element (SRE) located in the promoter regions of immediate early genes such as FOS and IER2. Upon activation of the JNK or MAPK/ERK signaling cascades, ELK1 is phosphorylated and rapidly induces target-gene transcription, thereby regulating cell proliferation, differentiation, and survival.

Storage

Storage:
Store at -80°C.
Storage Buffer:
PBS only, pH7.3

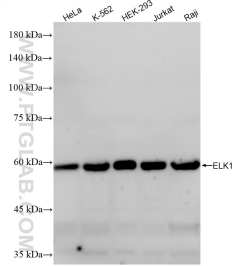
For technical support and original validation data for this product please contact:

T: 1 (888) 4PTGLAB (1-888-478-4522) (toll free in USA), or 1(312) 455-8498 (outside USA)

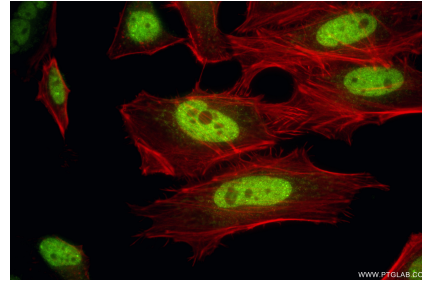
E: proteintech@ptglab.com
W: ptglab.com

This product is exclusively available under Proteintech Group brand and is not available to purchase from any other manufacturer.

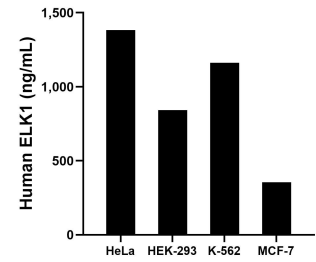
Selected Validation Data



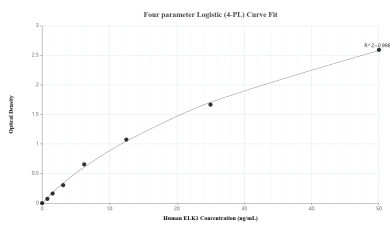
Various lysates were subjected to SDS PAGE followed by western blot with 87009-2-RR (ELK1 antibody) at dilution of 1:10000 incubated at room temperature for 1.5 hours. This data was developed using the same antibody clone with 87009-2-PBS in a different storage buffer formulation.



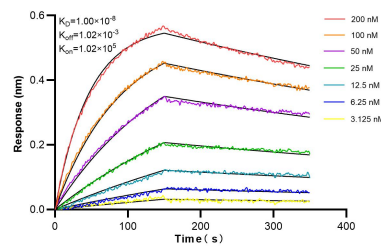
Immunofluorescent analysis of (4% PFA) fixed HeLa cells using ELK1 antibody (87009-2-RR, Clone: 252085B2) at dilution of 1:200 and CoraLite® 488-Conjugated Goat Anti-Rabbit IgG(H+L) (SA00013-2), CL594-Phalloidin (red). This data was developed using the same antibody clone with 87009-2-PBS in a different storage buffer formulation.



The mean ELK1 concentration was determined to be 1,382.52 ng/mL in HeLa cell extract based on a 1.20 mg/mL extract load, 84.180 ng/mL in HEK-293 cell extract based on a 1.20 mg/mL extract load, 1,161.24 ng/mL in K-562 cell extract based on a 1.20 mg/mL extract load and 354.56 ng/mL in MCF-7 cell extract based on a 1.20 mg/mL extract load.



Sandwich ELISA standard curve of MP02998-1, Human ELK1 Recombinant Matched Antibody Pair - PBS only. 87009-1-PBS was coated to a plate as the capture antibody and incubated with serial dilutions of standard Ag26683. 87009-2-PBS was HRP conjugated as the detection antibody. Range: 0.781-50 ng/mL.



Bilayer interferometry (BLI) kinetic assays of 87009-2-RR against Human ELK1 were performed. The affinity constant is 10.0 nM.