

For Research Use Only

ELK1 Recombinant monoclonal antibody

Catalog Number: 87009-2-RR



Basic Information

Catalog Number: 87009-2-RR	GenBank Accession Number: BC056150	Purification Method: Protein A purification
Size: 100ul , Concentration: 1000 µg/ml by Nanodrop;	GeneID (NCBI): 2002	CloneNo.: 252085B2
Source: Rabbit	UNIPROT ID: P19419	Recommended Dilutions: WB: 1:5000-1:50000 IF/ICC: 1:50-1:500
Isotype: IgG	Full Name: ELK1, member of ETS oncogene family	
Immunogen Catalog Number: AG26683	Calculated MW: 45 kDa	
	Observed MW: 58-60 kDa	

Applications

Tested Applications: WB, IF/ICC, ELISA	Positive Controls:
Species Specificity: human	WB : HeLa cells, K-562 cells, HEK-293 cells, Jurkat cells, Raji cells IF/ICC : HeLa cells,

Background Information

ELK1 is a nuclear transcription factor of the ETS-domain family and the ternary complex factor (TCF) sub-family. It binds to purine-rich DNA sequences and forms a ternary complex with serum response factor (SRF) on the serum response element (SRE) located in the promoter regions of immediate early genes such as FOS and IER2. Upon activation of the JNK or MAPK/ERK signaling cascades, ELK1 is phosphorylated and rapidly induces target-gene transcription, thereby regulating cell proliferation, differentiation, and survival.

Storage

Storage:
Store at -20°C. Stable for one year after shipment.
Storage Buffer:
PBS with 0.02% sodium azide and 50% glycerol, pH7.3
Aliquoting is unnecessary for -20°C storage

*** 20ul sizes contain 0.1% BSA

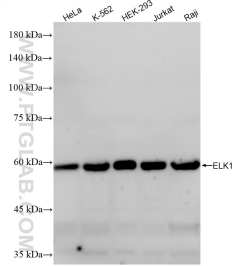
For technical support and original validation data for this product please contact:

T: 1 (888) 4PTGLAB (1-888-478-4522) (toll free in USA), or 1(312) 455-8498 (outside USA)

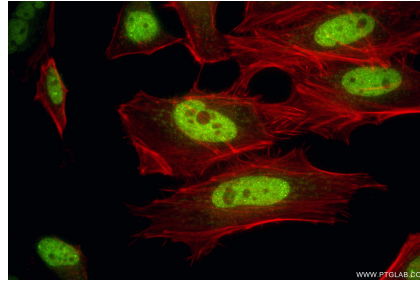
E: proteintech@ptglab.com
W: ptglab.com

This product is exclusively available under Proteintech Group brand and is not available to purchase from any other manufacturer.

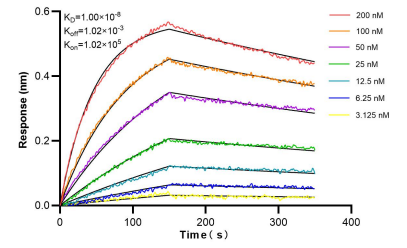
Selected Validation Data



Various lysates were subjected to SDS PAGE followed by western blot with 87009-2-RR (ELK1 antibody) at dilution of 1:10000 incubated at room temperature for 1.5 hours.



Immunofluorescent analysis of (4% PFA) fixed HeLa cells using ELK1 antibody (87009-2-RR, Clone: 252085B2) at dilution of 1:200 and CoraLite®488-Conjugated Goat Anti-Rabbit IgG(H+L) (SA00013-2), CL594-Phalloidin (red).



Bi-layer interferometry (BLI) kinetic assays of 87009-2-RR against Human ELK1 were performed. The affinity constant is 10.0 nM.