

For Research Use Only

# JAB1 Recombinant monoclonal antibody, PBS Only (Capture)

Catalog Number: 87012-1-PBS



## Basic Information

<b>Catalog Number:</b> 87012-1-PBS	<b>GenBank Accession Number:</b> BC001187	<b>Purification Method:</b> Protein A purification
<b>Size:</b> 100ug, Concentration: 1 mg/ml by Nanodrop;	<b>GeneID (NCBI):</b> 10987	<b>CloneNo.:</b> 252139B3
<b>Source:</b> Rabbit	<b>UNIPROT ID:</b> Q92905	
<b>Isotype:</b> IgG	<b>Full Name:</b> COP9 constitutive photomorphogenic homolog subunit 5 (Arabidopsis)	
<b>Immunogen Catalog Number:</b> AG25950	<b>Calculated MW:</b> 37 kDa	
	<b>Observed MW:</b> 35-38 kDa	

## Applications

**Tested Applications:**  
WB, Cytometric bead array, Sandwich ELISA, Indirect ELISA

**Species Specificity:**  
human, mouse

## Product Information

87012-1-PBS targets JAB1 as part of a matched antibody pair:

MP02823-1: 87012-1-PBS capture and 87012-2-PBS detection (validated in Cytometric bead array)

MP02823-2: 87012-1-PBS capture and 87012-3-PBS detection (validated in Sandwich ELISA)

Unconjugated rabbit recombinant monoclonal antibody in PBS only (BSA and azide free) storage buffer at a concentration of 1 mg/mL, ready for conjugation. Created using Proteintech's proprietary in-house recombinant technology. Recombinant production enables unrivalled batch-to-batch consistency, easy scale-up, and future security of supply.

This conjugation ready format makes antibodies ideal for use in many applications including: ELISAs, multiplex assays requiring matched pairs, mass cytometry, and multiplex imaging applications. Antibody use should be optimized by the end user for each application and assay.

## Background Information

Probable protease subunit of the COP9 signalosome complex (CSN), a complex involved in various cellular and developmental processes. The CSN complex is an essential regulator of the ubiquitin (Ubl) conjugation pathway by mediating the deneddylation of the cullin subunits of the SCF-type E3 ligase complexes, leading to decrease the Ubl ligase activity of SCF-type complexes such as SCF, CSA or DDB2. The complex is also involved in phosphorylation of p53/TP53, c-jun/JUN, IκappaBalpha/NFKBIA, ITPK1 and IRF8, possibly via its association with CK2 and PKD kinases. CSN-dependent phosphorylation of TP53 and JUN promotes and protects degradation by the Ubl system, respectively. In the complex, it probably acts as the catalytic center that mediates the cleavage of Nedd8 from cullins. It however has no metalloprotease activity by itself and requires the other subunits of the CSN complex. Interacts directly with a large number of proteins that are regulated by the CSN complex, confirming a key role in the complex. Promotes the proteasomal degradation of BRSK2.

## Storage

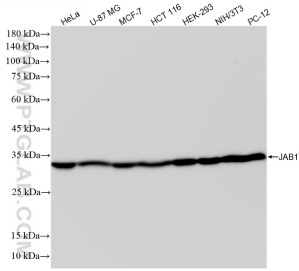
**Storage:**  
Store at -80°C.

**Storage Buffer:**  
PBS only, pH7.3

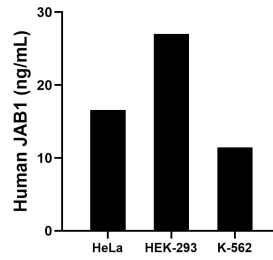
For technical support and original validation data for this product please contact:  
T: 1 (888) 4PTGLAB (1-888-478-4522) (toll free in USA), or 1(312) 455-8498 (outside USA)  
E: proteintech@ptglab.com  
W: ptglab.com

**This product is exclusively available under Proteintech Group brand and is not available to purchase from any other manufacturer.**

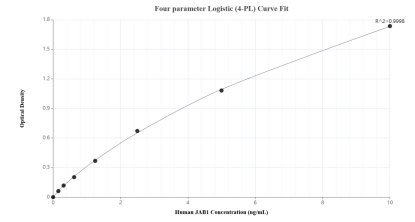
## Selected Validation Data



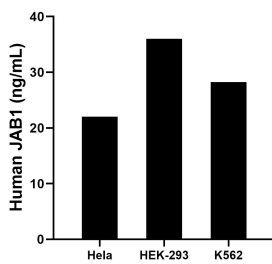
Various lysates were subjected to SDS PAGE followed by western blot with 87012-1-RR (JAB1 antibody) at dilution of 1:3000 incubated at room temperature for 1.5 hours. This data was developed using the same antibody clone with 87012-1-PBS in a different storage buffer formulation.



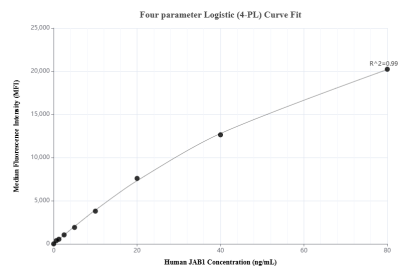
The mean JAB1 concentration was determined to be 16.58 ng/mL in HeLa cell extract based on a 1.20 mg/mL extract load, 27.02 ng/mL in HEK-293 cell extract based on a 1.20 mg/mL extract load and 11.45 ng/mL in K-562 cell extract based on a 1.20 mg/mL extract load.



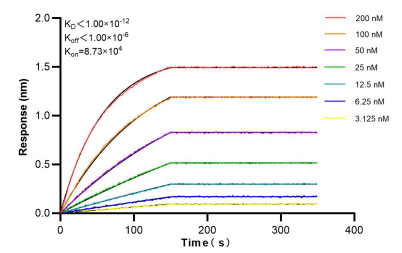
Sandwich ELISA standard curve of MP02823-2, Human JAB1 Recombinant Matched Antibody Pair - PBS only. 87012-1-PBS was coated to a plate as the capture antibody and incubated with serial dilutions of standard Ag25950. 87012-3-PBS was HRP conjugated as the detection antibody. Range: 0.156-10 ng/mL.



The mean JAB1 concentration was determined to be 22.0 ng/mL in HeLa cell extract based on a 1.2 mg/mL extract load, 36.0 ng/mL in HEK-293 cell extract based on a 1.2 mg/mL extract load, 28.2 ng/mL in K562 cell extract based on a 1.2 mg/mL extract load.



Cytometric bead array standard curve of MP02823-1, JAB1 Recombinant Matched Antibody Pair, PBS Only. Capture antibody: 87012-1-PBS. Detection antibody: 87012-2-PBS. Standard: Ag25950. Range: 0.625-80 ng/mL.



Biolayer interferometry (BLI) kinetic assays of 87012-1-RR against Human JAB1 were performed. The affinity constant is below 1 pM.