

For Research Use Only

GALR2 Recombinant monoclonal antibody

Catalog Number:87015-1-RR



Basic Information

Catalog Number: 87015-1-RR	GenBank Accession Number: BC074915	Purification Method: Protein A purification
Size: 100ul , Concentration: 1000 µg/ml by Nanodrop;	GeneID (NCBI): 8811	CloneNo.: 252067G6
Source: Rabbit	UNIPROT ID: O43603	Recommended Dilutions: WB: 1:1000-1:4000
Isotype: IgG	Full Name: galanin receptor 2	
Immunogen Catalog Number: AG24154	Calculated MW: 387 aa, 42 kDa	
	Observed MW: 42 kDa	

Applications

Tested Applications: WB, ELISA	Positive Controls: WB : HEK-293 cells, SH-SY5Y cells, C6 cells, mouse brain tissue, rat brain tissue
Species Specificity: human, mouse, rat	

Background Information

Galanin receptor type 2 (GALR2) is a receptor for galanin, GALP, and the hormone SPX1 (PMID:24517231). It is an important neuromodulator present in the brain, gastrointestinal system, and hypothalamo-pituitary axis. Activation of the GALR2 may protect the hippocampus from neuronal damage (PMID: 17263796). It is a 30-amino acid non-C-terminally amidated peptide that potently stimulates growth hormone secretion, inhibits cardiac vagal slowing of heart rate, abolishes sinus arrhythmia, and inhibits postprandial gastrointestinal motility. The activity of this receptor is mediated by G proteins that activate the phospholipase C/protein kinase C pathway (via G(q)) and that inhibits adenylyl cyclase. GALR2 has a calculated molecular weight of 42 kDa.

Storage

Storage:
Store at -20°C. Stable for one year after shipment.
Storage Buffer:
PBS with 0.02% sodium azide and 50% glycerol, pH7.3
Aliquoting is unnecessary for -20°C storage

*** 20ul sizes contain 0.1% BSA

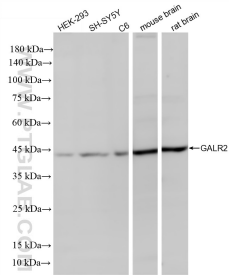
For technical support and original validation data for this product please contact:

T: 1 (888) 4PTGLAB (1-888-478-4522) (toll free in USA), or 1(312) 455-8498 (outside USA)

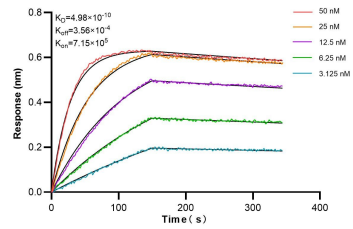
E: proteintech@ptglab.com
W: ptglab.com

This product is exclusively available under Proteintech Group brand and is not available to purchase from any other manufacturer.

Selected Validation Data



Various lysates were subjected to SDS PAGE followed by western blot with 87015-1-RR (GALR2 antibody) at dilution of 1:2000 incubated at room temperature for 1.5 hours.



Biolayer interferometry (BLI) kinetic assays of 87015-1-RR against Human GALR2 were performed. The affinity constant is 0.498 nM.