

For Research Use Only

# ZCCHC8 Recombinant monoclonal antibody, PBS Only

Catalog Number: 87017-1-PBS



## Basic Information

<b>Catalog Number:</b> 87017-1-PBS	<b>GenBank Accession Number:</b> BC065918	<b>Purification Method:</b> Protein A purification
<b>Size:</b> 100ug, Concentration: 1 mg/ml by Nanodrop;	<b>GeneID (NCBI):</b> 55596	<b>CloneNo.:</b> 252120B7
<b>Source:</b> Rabbit	<b>UNIPROT ID:</b> Q6NZY4	
<b>Isotype:</b> IgG	<b>Full Name:</b> zinc finger, CCHC domain containing 8	
<b>Immunogen Catalog Number:</b> AG19985	<b>Calculated MW:</b> 707 aa, 79 kDa	
	<b>Observed MW:</b> 90-100 kDa	

## Applications

**Tested Applications:**  
WB, IF/ICC, Indirect ELISA

**Species Specificity:**  
human, mouse, rat

## Background Information

The eukaryotic RNA exosome participates extensively in RNA processing and degradation. In human cells, three accessory factors (RBM7, ZCCHC8 and hMTR4) interact to form the nuclear exosome targeting (NEXT) complex, which directs a subset of non-coding RNAs for exosomal degradation. ZCCHC8 acts as a scaffold, mediating the interaction between RBM7 and MTR4. NEXT is involved in exosome-mediated surveillance and decay of noncoding RNAs, such as enhancer RNAs (eRNAs) and aberrant 3'-extended transcripts from small nuclear RNA (snRNA), telomerase RNA, and replication-dependent histone genes. NEXT is an important node in regulating nuclear exosome activities and takes part in several biological processes, including DNA damage response, stress response, and viral ribogenesis. ZCCHC8 also has a robust interaction with YTHDC1 (PMID: 28984244).

## Storage

**Storage:**  
Store at -80°C.

**Storage Buffer:**  
PBS only, pH7.3

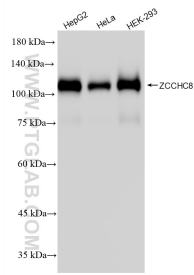
For technical support and original validation data for this product please contact:

T: 1 (888) 4PTGLAB (1-888-478-4522) (toll free in USA), or 1(312) 455-8498 (outside USA)

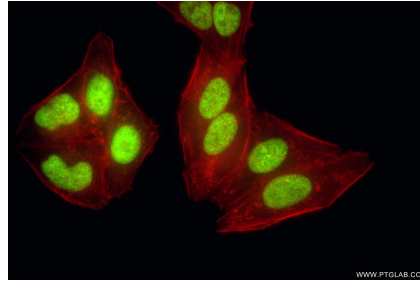
E: [proteintech@ptglab.com](mailto:proteintech@ptglab.com)  
W: [ptglab.com](http://ptglab.com)

**This product is exclusively available under Proteintech Group brand and is not available to purchase from any other manufacturer.**

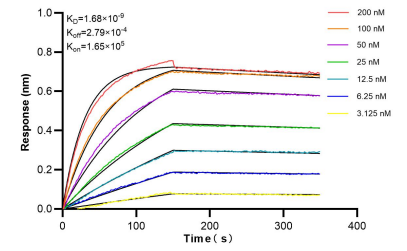
## Selected Validation Data



Various lysates were subjected to SDS PAGE followed by western blot with 87017-1-RR (ZCCHC8 antibody) at dilution of 1:20000 incubated at room temperature for 1.5 hours. This data was developed using the same antibody clone with 87017-1-PBS in a different storage buffer formulation.



Immunofluorescent analysis of (4% PFA) fixed HepG2 cells using ZCCHC8 antibody (87017-1-RR, Clone: 252120B7) at dilution of 1:500 and CoraLite® 488-Conjugated Goat Anti-Rabbit IgG(H+L) (SA00013-2), CL594-Phalloidin (red). This data was developed using the same antibody clone with 87017-1-PBS in a different storage buffer formulation.



Bi-layer interferometry (BLI) kinetic assays of 87017-1-RR against Human ZCCHC8 were performed. The affinity constant is 1.68 nM.