

For Research Use Only

ZCCHC8 Recombinant monoclonal antibody

Catalog Number:87017-1-RR



Basic Information

Catalog Number: 87017-1-RR	GenBank Accession Number: BC065918	Purification Method: Protein A purification
Size: 100ul , Concentration: 1000 µg/ml by Nanodrop;	GeneID (NCBI): 55596	CloneNo.: 252120B7
Source: Rabbit	UNIPROT ID: Q6NZY4	Recommended Dilutions: WB: 1:5000-1:50000 IF/ICC: 1:250-1:1000
Isotype: IgG	Full Name: zinc finger, CCHC domain containing 8	
Immunogen Catalog Number: AG19985	Calculated MW: 707 aa, 79 kDa	
	Observed MW: 90-100 kDa	

Applications

Tested Applications: WB, IF/ICC, ELISA	Positive Controls: WB : HepG2 cells, HeLa cells, HEK-293 cells
Species Specificity: human, mouse, rat	IF/ICC : HepG2 cells,

Background Information

The eukaryotic RNA exosome participates extensively in RNA processing and degradation. In human cells, three accessory factors (RBM7, ZCCHC8 and hMTR4) interact to form the nuclear exosome targeting (NEXT) complex, which directs a subset of non-coding RNAs for exosomal degradation. ZCCHC8 acts as a scaffold, mediating the interaction between RBM7 and MTR4. NEXT is involved in exosome-mediated surveillance and decay of noncoding RNAs, such as enhancer RNAs (eRNAs) and aberrant 3'-extended transcripts from small nuclear RNA (snRNA), telomerase RNA, and replication-dependent histone genes. NEXT is an important node in regulating nuclear exosome activities and takes part in several biological processes, including DNA damage response, stress response, and viral ribogenesis. ZCCHC8 also has a robust interaction with YTHDC1 (PMID: 28984244).

Storage

Storage:
Store at -20°C. Stable for one year after shipment.
Storage Buffer:
PBS with 0.02% sodium azide and 50% glycerol, pH7.3
Aliquoting is unnecessary for -20°C storage

*** 20ul sizes contain 0.1% BSA

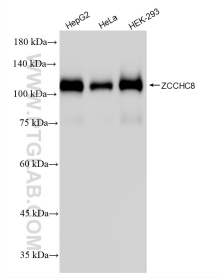
For technical support and original validation data for this product please contact:

T: 1 (888) 4PTGLAB (1-888-478-4522) (toll free in USA), or 1(312) 455-8498 (outside USA)

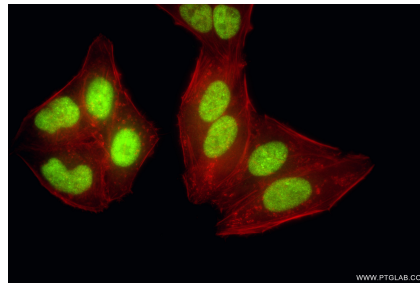
E: proteintech@ptglab.com
W: ptglab.com

This product is exclusively available under Proteintech Group brand and is not available to purchase from any other manufacturer.

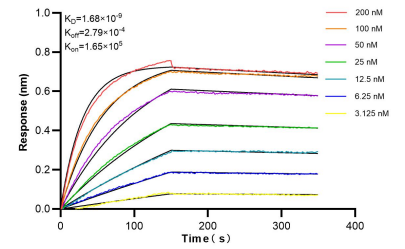
Selected Validation Data



Various lysates were subjected to SDS PAGE followed by western blot with 87017-1-RR (ZCCHC8 antibody) at dilution of 1:20000 incubated at room temperature for 1.5 hours.



Immunofluorescent analysis of (4% PFA) fixed HepG2 cells using ZCCHC8 antibody (87017-1-RR, Clone: 252120B7) at dilution of 1:500 and CoraLite® 488-Conjugated Goat Anti-Rabbit IgG(H+L) (SA00013-2), CL594-Phalloidin (red).



Biolayer interferometry (BLI) kinetic assays of 87017-1-RR against Human ZCCHC8 were performed. The affinity constant is 1.68 nM.