

For Research Use Only

Phospho-TAU (Ser396) Recombinant monoclonal antibody, PBS Only

Catalog Number:87029-11-PBS



Basic Information

Catalog Number:

87029-11-PBS

Size:

100ug , Concentration: 1 mg/ml by Nanodrop;

Source:

Rabbit

Isotype:

IgG

GenBank Accession Number:

NM_016835

GeneID (NCBI):

4137

UNIPROT ID:

P10636

Full Name:

microtubule-associated protein tau

Calculated MW:

79 kDa

Observed MW:

50-80 kDa

Purification Method:

Protein A purification

CloneNo.:

252170E5

Applications

Tested Applications:

WB, IF-P, Indirect ELISA

Species Specificity:

human, mouse

Background Information

Tau is a 441-amino acid hydrophilic protein sub-classified into 4 domains. The amino acids Thr181, Thr205 and Thr217 are associated with the early stages in the development of AD, while amino acid residues Ser262, Ser396 and Ser404 are associated with formation of aggregates.

Storage

Storage:

Store at -80°C.

Storage Buffer:

PBS only, pH7.3

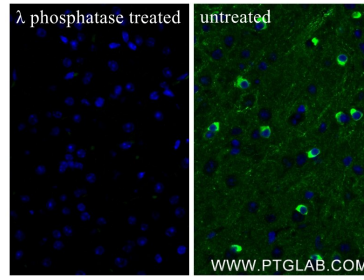
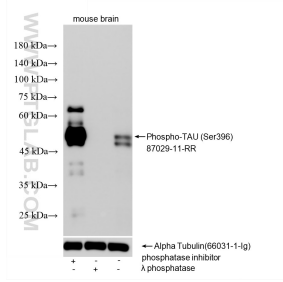
For technical support and original validation data for this product please contact:

T: 1 (888) 4PTGLAB (1-888-478-4522) (toll free in USA), or 1(312) 455-8498 (outside USA)

E: proteintech@ptglab.com
W: ptglab.com

This product is exclusively available under Proteintech Group brand and is not available to purchase from any other manufacturer.

Selected Validation Data



Non-treated mouse brain tissue, phosphatase inhibitor treated mouse brain tissue and λ phosphatase treated mouse brain tissue were subjected to SDS PAGE followed by western blot with 87029-11-RR (Phospho-TAU (Ser396) antibody) at dilution of 1:1000 incubated at room temperature for 1.5 hours. The membrane was stripped and re-blotted with Alpha Tubulin (66031-1-Ig) antibody as a loading control. This data was developed using the same antibody clone with 87029-



Immunofluorescent analysis of (4% PFA) fixed λ phosphatase treated mouse brain tissue using Phospho-TAU (Ser396) antibody (87029-11-RR, Clone: 252170E5) at dilution of 1:400 and CoraLite®488-Conjugated Goat Anti-Rabbit IgG(H+L) (SA00013-2). This data was developed using the same antibody clone with 87029-11-PBS in a different storage buffer formulation.