

For Research Use Only

# BRD3 Recombinant monoclonal antibody, PBS Only

Catalog Number: 87030-3-PBS



## Basic Information

<b>Catalog Number:</b> 87030-3-PBS	<b>GenBank Accession Number:</b> BC032124	<b>Purification Method:</b> Protein A purification
<b>Size:</b> 100ug , Concentration: 1 mg/ml by Nanodrop;	<b>GeneID (NCBI):</b> 8019	<b>CloneNo.:</b> 252143C1
<b>Source:</b> Rabbit	<b>UNIPROT ID:</b> Q15059	
<b>Isotype:</b> IgG	<b>Full Name:</b> bromodomain containing 3	
<b>Immunogen Catalog Number:</b> AG2433	<b>Calculated MW:</b> 556 aa, 61 kDa	
	<b>Observed MW:</b> 95-105 kDa	

## Applications

**Tested Applications:**  
WB, IF/ICC, Indirect ELISA

**Species Specificity:**  
human, mouse

## Background Information

BRD3 belongs to the BET family that a small group of unique, highly conserved bromodomain-containing genes with four members in mouse and human. There are BRD2, BRD3, BRD4 and BRDT. And BET family proteins all localize in the nucleus, and contain two tandems N-terminal BRDs, an extra-terminal (ET) domain and a more divergent C-terminal recruitment domain (PMID:25849938). BRD2, BRD3, and BRD4 play key roles in transcription of genes required for both inflammation and cancer. Northern hybridization revealed that BRD3 is most abundant in testis, ovary, placenta, uterus, and brain (PMID:15261828; PMID:27451123).

## Storage

**Storage:**  
Store at -80°C.

**Storage Buffer:**  
PBS only, pH7.3

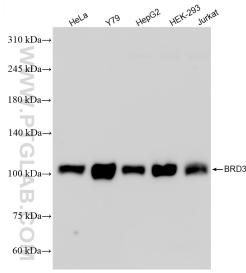
For technical support and original validation data for this product please contact:

T: 1 (888) 4PTGLAB (1-888-478-4522) (toll free in USA), or 1(312) 455-8498 (outside USA)

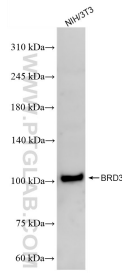
E: [proteintech@ptglab.com](mailto:proteintech@ptglab.com)  
W: [ptglab.com](http://ptglab.com)

**This product is exclusively available under Proteintech Group brand and is not available to purchase from any other manufacturer.**

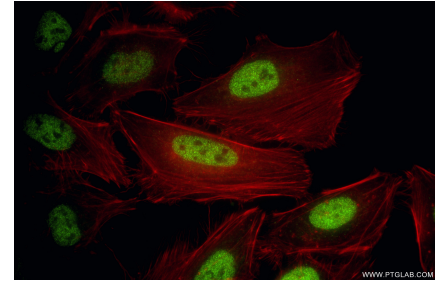
## Selected Validation Data



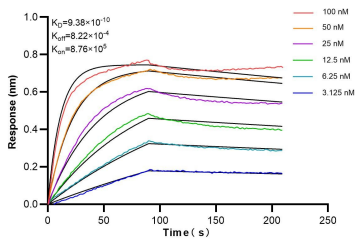
Various lysates were subjected to SDS PAGE followed by western blot with 87030-3-RR (BRD3 antibody) at dilution of 1:1000 incubated at room temperature for 1.5 hours. This data was developed using the same antibody clone with 87030-3-PBS in a different storage buffer formulation.



NIH/3T3 cells were subjected to SDS PAGE followed by western blot with 87030-3-RR (BRD3 antibody) at dilution of 1:1000 incubated at room temperature for 1.5 hours. This data was developed using the same antibody clone with 87030-3-PBS in a different storage buffer formulation.



Immunofluorescent analysis of (4% PFA) fixed HeLa cells using BRD3 antibody (87030-3-RR, Clone: 252143C1) at dilution of 1:500 and CoraLite@488-Conjugated Goat Anti-Rabbit IgG(H+L) (SA00013-2), CL594-Phalloidin (red). This data was developed using the same antibody clone with 87030-3-PBS in a different storage buffer formulation.



Biolayer interferometry (BLI) kinetic assays of 87199-1-RR against Human BRD3 were performed. The affinity constant is 0.938 nM.