

For Research Use Only

# HADHA Recombinant monoclonal antibody, PBS Only (Capture)

Catalog Number: 87032-2-PBS



## Basic Information

|   |  |   |
|---|--|---|
| <b>Catalog Number:</b><br>87032-2-PBS                       | <b>GenBank Accession Number:</b><br>BC009235   | <b>Purification Method:</b><br>Protein A purification |
| <b>Size:</b><br>100ug , Concentration: 1 mg/ml by Nanodrop; | <b>GeneID (NCBI):</b><br>3030  | <b>CloneNo.:</b><br>252119G11                         |
| <b>Source:</b><br>Rabbit                                    | <b>UNIPROT ID:</b><br>P40939   |   |
| <b>Isotype:</b><br>IgG                                      | <b>Full Name:</b><br>hydroxyacyl-Coenzyme A dehydrogenase/3-ketoacyl-Coenzyme A thiolase/enoyl-Coenzyme A hydratase (trifunctional protein), alpha subunit |   |
| <b>Immunogen Catalog Number:</b><br>AG1211                  | <b>Calculated MW:</b><br>83 kDa  |   |

## Applications

**Tested Applications:**  
Cytometric bead array, Indirect ELISA

**Species Specificity:**  
human

## Product Information

87032-2-PBS targets HADHA as part of a matched antibody pair:

MP02839-1: 87032-2-PBS capture and 87032-1-PBS detection (validated in Cytometric bead array)

Unconjugated rabbit recombinant monoclonal antibody in PBS only (BSA and azide free) storage buffer at a concentration of 1 mg/mL, ready for conjugation. Created using Proteintech's proprietary in-house recombinant technology. Recombinant production enables unrivalled batch-to-batch consistency, easy scale-up, and future security of supply.

This conjugation ready format makes antibodies ideal for use in many applications including: ELISAs, multiplex assays requiring matched pairs, mass cytometry, and multiplex imaging applications. Antibody use should be optimized by the end user for each application and assay.

## Storage

**Storage:**  
Store at -80°C.

**Storage Buffer:**  
PBS only, pH7.3

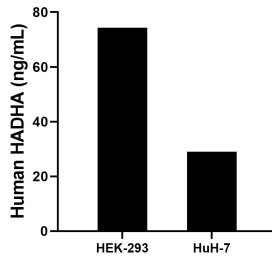
For technical support and original validation data for this product please contact:

T: 1 (888) 4PTGLAB (1-888-478-4522) (toll free in USA), or 1(312) 455-8498 (outside USA)

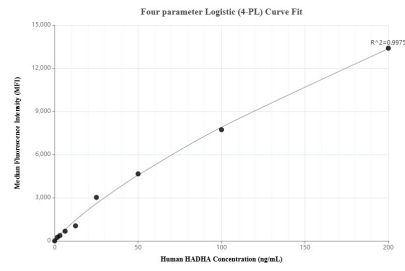
E: [proteintech@ptglab.com](mailto:proteintech@ptglab.com)  
W: [ptglab.com](http://ptglab.com)

**This product is exclusively available under Proteintech Group brand and is not available to purchase from any other manufacturer.**

## Selected Validation Data



The mean HADHA concentration was determined to be 74.3 ng/mL in HEK-293 cell extract based on a 1.2 mg/mL extract load, 29.0 ng/mL in HuH-7 cell extract based on a 1.2 mg/mL extract load.



Cytometric bead array standard curve of MP02839-1, HADHA Recombinant Matched Antibody Pair, PBS Only. Capture antibody: 87032-2-PBS. Detection antibody: 87032-1-PBS. Standard: Ag1211. Range: 1.562-200 ng/mL