

For Research Use Only

SMAD3 Recombinant monoclonal antibody

Catalog Number:87035-1-RR



Basic Information

Catalog Number: 87035-1-RR	GenBank Accession Number: NM_005902	Purification Method: Protein A purification
Size: 100ul , Concentration: 1000 µg/ml by Nanodrop;	GeneID (NCBI): 4088	CloneNo.: 251981H8
Source: Rabbit	UNIPROT ID: P84022	Recommended Dilutions: WB: 1:5000-1:50000 IHC: 1:50-1:500 IF/ICC: 1:500-1:2000
Isotype: IgG	Full Name: SMAD family member 3	
Immunogen Catalog Number: AG32623	Calculated MW: 48 kDa	
	Observed MW: 52 kDa	

Applications

Tested Applications:
WB, IHC, IF/ICC, ELISA

Species Specificity:
human, mouse, rat

Note-IHC: suggested antigen retrieval with TE buffer pH 9.0; (*) Alternatively, antigen retrieval may be performed with citrate buffer pH 6.0

Positive Controls:

WB : HT-1080 cells, HeLa cells, HEK-293 cells, NIH/3T3 cells, mouse brain tissue, rat brain tissue

IHC : mouse prostate tissue,

IF/ICC : HEK-293 cells,

Background Information

SMAD3, also named as hMAD 3 or Mad3, is a 425 amino acid protein, which contains one MH1 domain and one MH2 domain. SMAD3 localizes in the nucleus and cytoplasm. SMAD3 plays an essential role in development and maintenance of self-tolerance and is a critical mediator of the TGFB signaling pathway. SMAD3 is involved in TGFB dependent regulation of steroidogenesis and in T-cell response to TGFB.

Storage

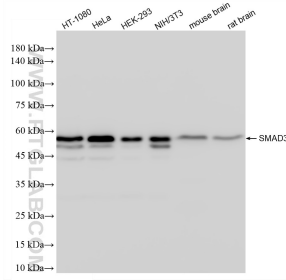
Storage:
Store at -20°C. Stable for one year after shipment.
Storage Buffer:
PBS with 0.02% sodium azide and 50% glycerol, pH7.3
Aliquoting is unnecessary for -20°C storage

*** 20ul sizes contain 0.1% BSA

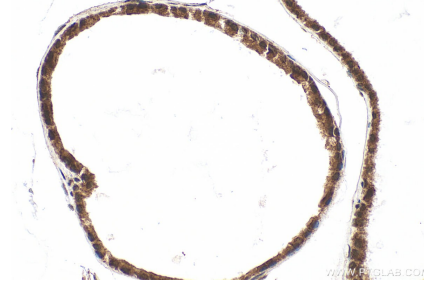
For technical support and original validation data for this product please contact:
T: 1 (888) 4PTGLAB (1-888-478-4522) (toll free in USA), or 1(312) 455-8498 (outside USA)
E: proteintech@ptglab.com
W: ptglab.com

This product is exclusively available under Proteintech Group brand and is not available to purchase from any other manufacturer.

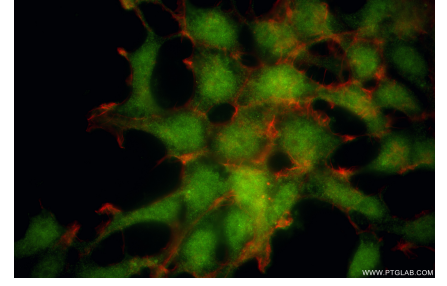
Selected Validation Data



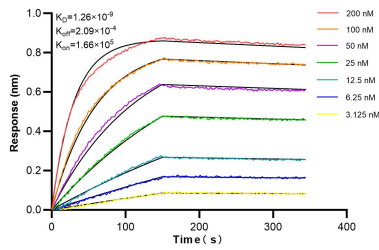
Various lysates were subjected to SDS PAGE followed by western blot with 87035-1-RR (SMAD3 antibody) at dilution of 1:10000 incubated at room temperature for 1.5 hours.



Immunohistochemical analysis of paraffin-embedded mouse prostate tissue slide using 87035-1-RR (SMAD3 antibody) at dilution of 1:200 (under 40x lens). Heat mediated antigen retrieval with Tris-EDTA buffer (pH 9.0).



Immunofluorescent analysis of (4% PFA) fixed HEK-293 cells using SMAD3 antibody (87035-1-RR, Clone: 251981H8) at dilution of 1:1000 and CoraLite® 488-Conjugated Goat Anti-Rabbit IgG(H+L) (SA00013-2), CL594-Phalloidin (red).



Biolayer interferometry (BLI) kinetic assays of 87035-1-RR against Human SMAD3 were performed. The affinity constant is 1.26 nM.