

For Research Use Only

SMAD3 Recombinant monoclonal antibody, PBS Only (Detector)

Catalog Number: 87035-2-PBS



Basic Information

Catalog Number: 87035-2-PBS	GenBank Accession Number: NM_005902	Purification Method: Protein A purification
Size: 100ug, Concentration: 1 mg/ml by Nanodrop;	GeneID (NCBI): 4088	CloneNo.: 251981D1
Source: Rabbit	UNIPROT ID: P84022	
Isotype: IgG	Full Name: SMAD family member 3	
Immunogen Catalog Number: AG32623	Calculated MW: 48 kDa	

Applications

Tested Applications:
Cytometric bead array, Indirect ELISA

Species Specificity:
human

Product Information

87035-2-PBS targets SMAD3 as part of a matched antibody pair:

MP02853-1: 87035-3-PBS capture and 87035-2-PBS detection (validated in Cytometric bead array)

Unconjugated rabbit recombinant monoclonal antibody in PBS only (BSA and azide free) storage buffer at a concentration of 1 mg/mL, ready for conjugation. Created using Proteintech's proprietary in-house recombinant technology. Recombinant production enables unrivalled batch-to-batch consistency, easy scale-up, and future security of supply.

This conjugation ready format makes antibodies ideal for use in many applications including: ELISAs, multiplex assays requiring matched pairs, mass cytometry, and multiplex imaging applications. Antibody use should be optimized by the end user for each application and assay.

Storage

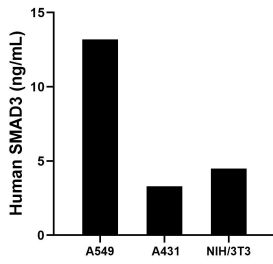
Storage:
Store at -80°C.

Storage Buffer:
PBS only, pH7.3

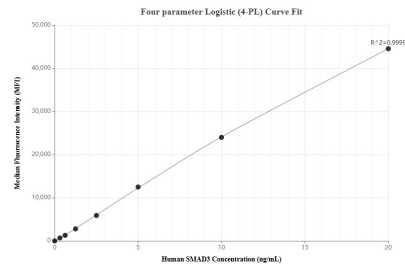
For technical support and original validation data for this product please contact:
T: 1 (888) 4PTGLAB (1-888-478-4522) (toll free in USA), or 1(312) 455-8498 (outside USA) E: proteintech@ptglab.com
W: ptglab.com

This product is exclusively available under Proteintech Group brand and is not available to purchase from any other manufacturer.

Selected Validation Data



The mean SMAD3 concentration was determined to be 13.2 ng/mL in A549 cell extract based on a 1.2 mg/mL extract load, 3.3 ng/mL in A431 cell extract based on a 1.2 mg/mL extract load, 4.5 ng/mL in NIH/3T3 cell extract based on a 1.2 mg/mL extract load.



Cytometric bead array standard curve of MP02853-1, SMAD3 Recombinant Matched Antibody Pair, PBS Only. Capture antibody: 87035-3-PBS. Detection antibody: 87035-2-PBS. Standard: Ag32623. Range: 0.312-20 ng/mL.