

For Research Use Only

SMAD3 Recombinant monoclonal antibody, PBS Only (Capture)

Catalog Number: 87035-4-PBS



Basic Information

Catalog Number: 87035-4-PBS	GenBank Accession Number: NML_005902	Purification Method: Protein A purification
Size: 100ug , Concentration: 1 mg/ml by Nanodrop;	GeneID (NCBI): 4088	CloneNo.: 251981E7
Source: Rabbit	UNIPROT ID: P84022	
Isotype: IgG	Full Name: SMAD family member 3	
Immunogen Catalog Number: AG32623	Calculated MW: 48 kDa	

Applications

Tested Applications:
Sandwich ELISA, Indirect ELISA

Species Specificity:
human

Product Information

87035-4-PBS targets SMAD3 as part of a matched antibody pair:

MP02853-2: 87035-4-PBS capture and 87035-1-PBS detection (validated in Sandwich ELISA)

Unconjugated rabbit recombinant monoclonal antibody in PBS only (BSA and azide free) storage buffer at a concentration of 1 mg/mL, ready for conjugation. Created using Proteintech's proprietary in-house recombinant technology. Recombinant production enables unrivalled batch-to-batch consistency, easy scale-up, and future security of supply.

This conjugation ready format makes antibodies ideal for use in many applications including: ELISAs, multiplex assays requiring matched pairs, mass cytometry, and multiplex imaging applications. Antibody use should be optimized by the end user for each application and assay.

Storage

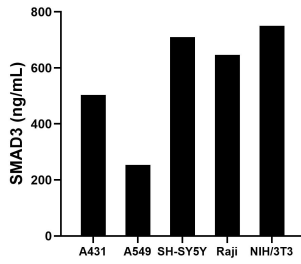
Storage:
Store at -80°C.

Storage Buffer:
PBS only, pH7.3

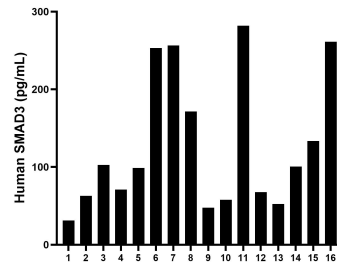
For technical support and original validation data for this product please contact:
T: 1 (888) 4PTGLAB (1-888-478-4522) (toll free in USA), or 1(312) 455-8498 (outside USA) E: proteintech@ptglab.com
W: ptglab.com

This product is exclusively available under Proteintech Group brand and is not available to purchase from any other manufacturer.

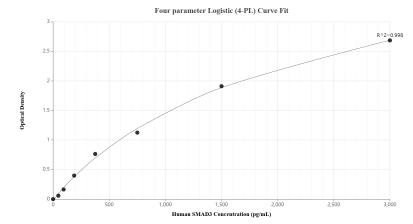
Selected Validation Data



The mean SMAD3 concentration was determined to be 503.2 ng/mL in A431 cell extract based on a 1.2 mg/mL extract load, 253.4 ng/mL in A549 cell extract based on a 1.2 mg/mL extract load, 709.6 ng/mL in SH-SY5Y cell extract based on a 1.2 mg/mL extract load, 646.7 ng/mL in Raji cell extract based on a 1.2 mg/mL extract load and 750.4 ng/mL in NIH/3T3 cell extract based on a 1.2 mg/mL extract load.



Serum of sixteen individual healthy human donors was measured. The SMAD3 concentration of detected samples was determined to be 128.2 pg/mL with a range of 31.3-281.8 pg/mL.



Sandwich ELISA standard curve of MP02853-2, Human SMAD3 Recombinant Matched Antibody Pair - PBS only. 87035-4-PBS was coated to a plate as the capture antibody and incubated with serial dilutions of standard Ag32623. 87035-1-PBS was HRP conjugated as the detection antibody. Range: 46.9-3000 pg/mL