

For Research Use Only

# RRN3 Recombinant monoclonal antibody, PBS Only (Capture)

Catalog Number: 87046-2-PBS



## Basic Information

<b>Catalog Number:</b> 87046-2-PBS	<b>GenBank Accession Number:</b> BC132688	<b>Purification Method:</b> Protein A purification
<b>Size:</b> 100ug , Concentration: 1 mg/ml by Nanodrop;	<b>GeneID (NCBI):</b> 54700	<b>CloneNo.:</b> 252129D5
<b>Source:</b> Rabbit	<b>UNIPROT ID:</b> Q9NYV6	
<b>Isotype:</b> IgG	<b>Full Name:</b> RRN3 RNA polymerase I transcription factor homolog (S. cerevisiae)	
<b>Immunogen Catalog Number:</b> AG23207		

## Applications

**Tested Applications:**  
Sandwich ELISA, Indirect ELISA

**Species Specificity:**  
human

## Product Information

87046-2-PBS targets RRN3 as part of a matched antibody pair:

MP02997-1: 87046-2-PBS capture and 87046-1-PBS detection (validated in Sandwich ELISA)

Unconjugated rabbit recombinant monoclonal antibody in PBS only (BSA and azide free) storage buffer at a concentration of 1 mg/mL, ready for conjugation. Created using Proteintech's proprietary in-house recombinant technology. Recombinant production enables unrivalled batch-to-batch consistency, easy scale-up, and future security of supply.

This conjugation ready format makes antibodies ideal for use in many applications including: ELISAs, multiplex assays requiring matched pairs, mass cytometry, and multiplex imaging applications. Antibody use should be optimized by the end user for each application and assay.

## Storage

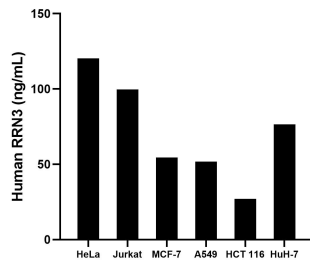
**Storage:**  
Store at -80°C.

**Storage Buffer:**  
PBS only, pH7.3

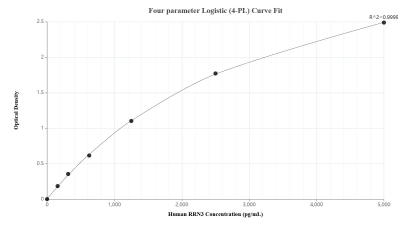
For technical support and original validation data for this product please contact:  
T: 1 (888) 4PTGLAB (1-888-478-4522) (toll free in USA), or 1(312) 455-8498 (outside USA)      E: proteintech@ptglab.com  
W: ptglab.com

**This product is exclusively available under Proteintech Group brand and is not available to purchase from any other manufacturer.**

## Selected Validation Data



The mean RRN3 concentration was determined to be 120.4 ng/mL in HeLa cell extract based on a 1.2 mg/mL extract load, 99.7 ng/mL in Jurkat cell extract based on a 1.2 mg/mL extract load, 54.5 ng/mL in MCF-7 cell extract based on a 1.2 mg/mL extract load, 51.8 ng/mL in A549 cell extract based on a 1.2 mg/mL extract load, 27.1 ng/mL in HCT 116 extract based on a 1.2 mg/mL extract load and 76.5 ng/mL in HuH-7 cell extract based on a 1.2 mg/mL extract load.



Sandwich ELISA standard curve of MP02997-1, Human RRN3 Recombinant Matched Antibody Pair - PBS only. 87046-2-PBS was coated to a plate as the capture antibody and incubated with serial dilutions of standard Ag23207. 87046-1-PBS was HRP conjugated as the detection antibody. Range: 156-5000 pg/mL