

For Research Use Only

OTUD6B Recombinant monoclonal antibody, PBS Only (Capture)

Catalog Number: 87049-1-PBS



Basic Information

Catalog Number: 87049-1-PBS	GenBank Accession Number: BC029760	Purification Method: Protein A purification
Size: 100ug, Concentration: 1 mg/ml by Nanodrop;	GeneID (NCBI): 51633	CloneNo.: 251982E6
Source: Rabbit	UNIPROT ID: Q8N6M0	
Isotype: IgG	Full Name: OTU domain containing 6B	
Immunogen Catalog Number: AG22044	Calculated MW: 293 aa, 34 kDa	
	Observed MW: 34 kDa	

Applications

Tested Applications:
WB, IF/ICC, Cytometric bead array, Indirect ELISA

Species Specificity:
human

Product Information

87049-1-PBS targets OTUD6B as part of a matched antibody pair:

MP02964-1: 87049-1-PBS capture and 87049-2-PBS detection (validated in Cytometric bead array)

Unconjugated rabbit recombinant monoclonal antibody in PBS only (BSA and azide free) storage buffer at a concentration of 1 mg/mL, ready for conjugation. Created using Proteintech's proprietary in-house recombinant technology. Recombinant production enables unrivalled batch-to-batch consistency, easy scale-up, and future security of supply.

This conjugation ready format makes antibodies ideal for use in many applications including: ELISAs, multiplex assays requiring matched pairs, mass cytometry, and multiplex imaging applications. Antibody use should be optimized by the end user for each application and assay.

Background Information

OTUD6B, also known as DUBA5, belongs to a DUB subfamily characterized by an ovarian tumor domain (OTU). It's a functional deubiquitinating enzyme, a class of protease that specifically cleaves ubiquitin linkages. OTUD6B function may be connected to growth and proliferation. It has been reported that OTUD6B could significantly suppress HCC cells migration and metastasis. The calculated molecular weight of OTUD6B is 34 kDa, 87049-1-RR can detect the band around 34 kDa. (PMID:32323143)

Storage

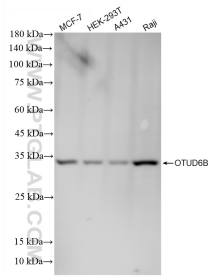
Storage:
Store at -80°C.

Storage Buffer:
PBS only, pH7.3

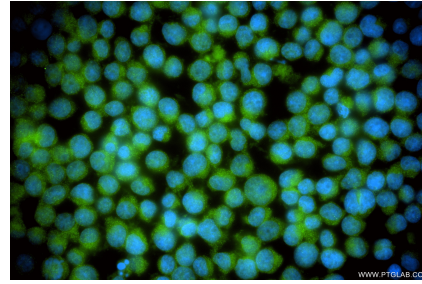
For technical support and original validation data for this product please contact:
T: 1 (888) 4PTGLAB (1-888-478-4522) (toll free in USA), or 1(312) 455-8498 (outside USA)
E: proteintech@ptglab.com
W: ptglab.com

This product is exclusively available under Proteintech Group brand and is not available to purchase from any other manufacturer.

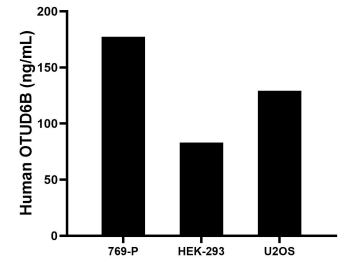
Selected Validation Data



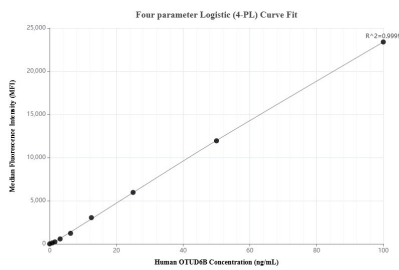
Various lysates were subjected to SDS PAGE followed by western blot with 87049-1-RR (OTUD6B antibody) at dilution of 1:10000 incubated at room temperature for 1.5 hours. This data was developed using the same antibody clone with 87049-1-PBS in a different storage buffer formulation.



Immunofluorescent analysis of (-20°C Ethanol) fixed Jurkat cells using OTUD6B antibody (87049-1-RR, Clone: 251982E6) at dilution of 1:400 and CoraLite® 488-Conjugated Goat Anti-Rabbit IgG(H+L) (SA00013-2). This data was developed using the same antibody clone with 87049-1-PBS in a different storage buffer formulation.



The mean OTUD6B concentration was determined to be 177.4 ng/mL in 769-P cell extract based on a 1.2 mg/mL extract load, 83.1 ng/mL in HEK-293 cell extract based on a 1.2 mg/mL extract load, 129.1 ng/mL in U2OS cell extract based on a 1.2 mg/mL extract load.



Cytometric bead array standard curve of MP02964-1, OTUD6B Recombinant Matched Antibody Pair, PBS Only. Capture antibody: 87049-1-PBS. Detection antibody: 87049-2-PBS. Standard: Ag22044. Range: 0.781-100 ng/mL.