

For Research Use Only

Mouse CD300a Recombinant monoclonal antibody, PBS Only (Detector)

Catalog Number: 87050-1-PBS



Basic Information

Catalog Number: 87050-1-PBS	GenBank Accession Number: GeneID (NCBI): 217303	Purification Method: Protein A purification
Size: 100ug , Concentration: 1 mg/ml by Nanodrop;	UNIPROT ID: Q6S1Q0-1	CloneNo.: 251972C10
Source: Rabbit	Full Name: CD300A antigen	
Isotype: IgG	Calculated MW: 36 kDa	
Immunogen Catalog Number: EG2675	Observed MW: 60-70 kDa	

Applications

Tested Applications:
WB, Sandwich ELISA, Indirect ELISA

Species Specificity:
mouse, rat

Product Information

87050-1-PBS targets CD300a as part of a matched antibody pair:

MP03183-1: 87050-2-PBS capture and 87050-1-PBS detection (validated in Sandwich ELISA)

Unconjugated rabbit recombinant monoclonal antibody in PBS only (BSA and azide free) storage buffer at a concentration of 1 mg/mL, ready for conjugation. Created using Proteintech's proprietary in-house recombinant technology. Recombinant production enables unrivalled batch-to-batch consistency, easy scale-up, and future security of supply.

This conjugation ready format makes antibodies ideal for use in many applications including: ELISAs, multiplex assays requiring matched pairs, mass cytometry, and multiplex imaging applications. Antibody use should be optimized by the end user for each application and assay.

Background Information

CD300a is a transmembrane protein with an immunoglobulin (Ig)V-like extracellular domain and a cytoplasmic tail containing immunoreceptor tyrosine-based inhibitory motifs (ITIMs), providing the receptor with an inhibitory capacity. The relevance of the CD300a molecule in several pathological conditions has been highlighted by multiple studies. (PMID: 37762055)

Storage

Storage:
Store at -80°C.

Storage Buffer:
PBS only, pH7.3

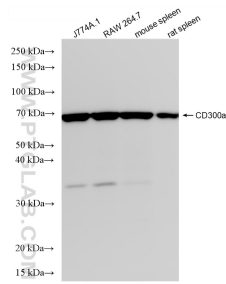
For technical support and original validation data for this product please contact:

T: 1 (888) 4PTGLAB (1-888-478-4522) (toll free in USA), or 1(312) 455-8498 (outside USA)

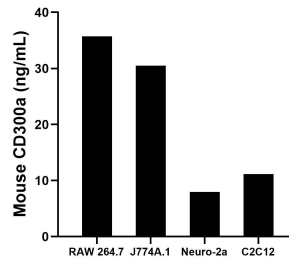
E: proteintech@ptglab.com
W: ptglab.com

This product is exclusively available under Proteintech Group brand and is not available to purchase from any other manufacturer.

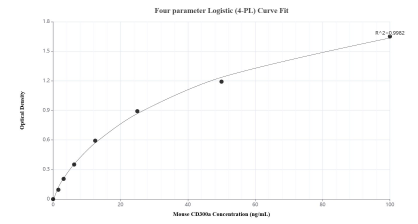
Selected Validation Data



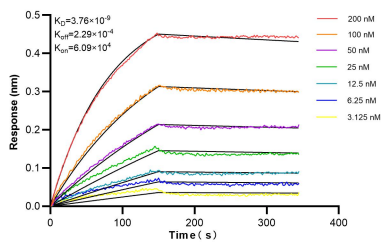
Various lysates were subjected to SDS PAGE followed by western blot with 87050-1-RR (CD300a antibody) at dilution of 1:2000 incubated at room temperature for 1.5 hours. This data was developed using the same antibody clone with 87050-1-PBS in a different storage buffer formulation.



The mean CD300a concentration was determined to be 35.71 ng/mL in RAW 264.7 cell extract based on a 1.20 mg/mL extract load, 30.51 ng/mL in J774A.1 cell extract based on a 1.30 mg/mL extract load, 7.96 ng/mL in Neuro-2a cell extract based on a 1.20 mg/mL extract load and 11.16 ng/mL in C2C12 cell extract based on a 1.10 mg/mL extract load.



Sandwich ELISA standard curve of MP03183-1, Mouse CD300a Recombinant Matched Antibody Pair - PBS only. 87050-2-PBS was coated to a plate as the capture antibody and incubated with serial dilutions of standard Eg2675. 87050-1-PBS was HRP conjugated as the detection antibody. Range: 1.56-100 ng/mL.



Bi-layer interferometry (BLI) kinetic assays of 87050-1-RR against Mouse CD300a were performed. The affinity constant is 3.76 nM.