

For Research Use Only

SOX10 Recombinant monoclonal antibody, PBS Only (Capture)

Catalog Number: 87051-3-PBS



Basic Information

Catalog Number: 87051-3-PBS	GenBank Accession Number: BC002824	Purification Method: Protein A purification
Size: 100ug , Concentration: 1 mg/ml by Nanodrop;	GeneID (NCBI): 6663	CloneNo.: 252024E10
Source: Rabbit	UNIPROT ID: P56693	
Isotype: IgG	Full Name: SRY (sex determining region Y)-box 10	
Immunogen Catalog Number: AG38090	Calculated MW: 50 kDa	
	Observed MW: 50-65 kDa	

Applications

Tested Applications:
WB, IF/ICC, Sandwich ELISA, Indirect ELISA

Species Specificity:
human, rat

Product Information

87051-3-PBS targets SOX10 as part of a matched antibody pair:

MP02850-2: 87051-3-PBS capture and 87051-4-PBS detection (validated in Sandwich ELISA)

Unconjugated rabbit recombinant monoclonal antibody in PBS only (BSA and azide free) storage buffer at a concentration of 1 mg/mL, ready for conjugation. Created using Proteintech's proprietary in-house recombinant technology. Recombinant production enables unrivalled batch-to-batch consistency, easy scale-up, and future security of supply.

This conjugation ready format makes antibodies ideal for use in many applications including: ELISAs, multiplex assays requiring matched pairs, mass cytometry, and multiplex imaging applications. Antibody use should be optimized by the end user for each application and assay.

Background Information

Sox10 is a transcription factor that has a crucial role in complex signalling pathways regulating central nervous system and neural crest development. The calculated molecular weight of SOX10 is 50 kDa, but modified SOX10 is about 55-65 kDa. (PMID: 23799842, 39982575)

Storage

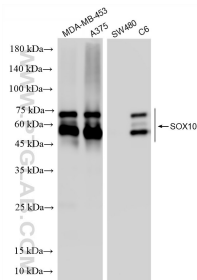
Storage:
Store at -80°C.

Storage Buffer:
PBS only, pH7.3

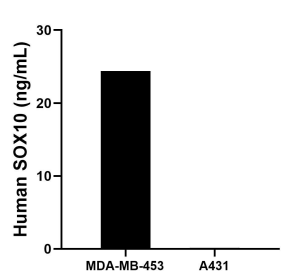
For technical support and original validation data for this product please contact:
T: 1 (888) 4PTGLAB (1-888-478-4522) (toll free in USA), or 1(312) 455-8498 (outside USA)
E: proteintech@ptglab.com
W: ptglab.com

This product is exclusively available under Proteintech Group brand and is not available to purchase from any other manufacturer.

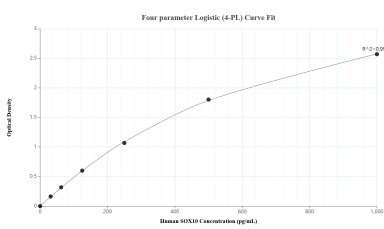
Selected Validation Data



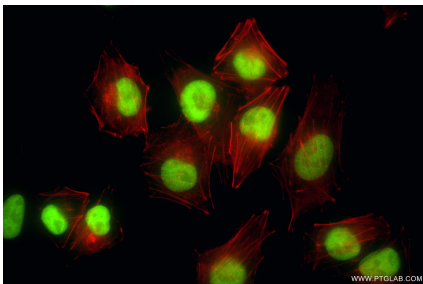
Various lysates were subjected to SDS PAGE followed by western blot with 87051-3-RR (SOX10 antibody) at dilution of 1:10000 incubated at room temperature for 1.5 hours. This data was developed using the same antibody clone with 87051-3-PBS in a different storage buffer formulation.



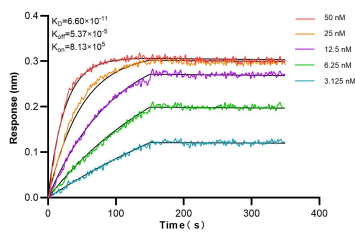
The mean SOX10 concentration was determined to be 24.4 ng/mL in MDA-MB-453 cell extract based on a 1.5 mg/mL extract load and 0.2 ng/mL in A431 cell extract based on a 1.2 mg/mL extract load.



Sandwich ELISA standard curve of MP02850-2, Human SOX10 Recombinant Matched Antibody Pair - PBS only. 87051-3-PBS was coated to a plate as the capture antibody and incubated with serial dilutions of standard Ag38090. 87051-4-PBS was HRP conjugated as the detection antibody. Range: 31.3-1000 pg/mL



Immunofluorescent analysis of (4% PFA) fixed A375 cells using SOX10 antibody (87051-3-RR, Clone: 252024E10) at dilution of 1:1000 and CoraLite@488-Conjugated Goat Anti-Rabbit IgG(H+L) (SA00013-2), CL594-Phalloidin (red). This data was developed using the same antibody clone with 87051-3-PBS in a different storage buffer formulation.



Biolayer interferometry (BLI) kinetic assays of 87051-3-RR against Human SOX10 were performed. The affinity constant is 66.0 pM.