

For Research Use Only

SOX10 Recombinant monoclonal antibody, PBS Only (Detector)

Catalog Number: 87051-4-PBS



Basic Information

Catalog Number: 87051-4-PBS	GenBank Accession Number: BC002824	Purification Method: Protein A purification
Size: 100ug , Concentration: 1 mg/ml by Nanodrop;	GeneID (NCBI): 6663	CloneNo.: 252024A6
Source: Rabbit	UNIPROT ID: P56693	
Isotype: IgG	Full Name: SRY (sex determining region Y)-box 10	
Immunogen Catalog Number: AG38090	Calculated MW: 50 kDa	

Applications

Tested Applications:
Sandwich ELISA, Indirect ELISA

Species Specificity:
human

Product Information

87051-4-PBS targets SOX10 as part of a matched antibody pair:

MP02850-2: 87051-3-PBS capture and 87051-4-PBS detection (validated in Sandwich ELISA)

Unconjugated rabbit recombinant monoclonal antibody in PBS only (BSA and azide free) storage buffer at a concentration of 1 mg/mL, ready for conjugation. Created using Proteintech's proprietary in-house recombinant technology. Recombinant production enables unrivalled batch-to-batch consistency, easy scale-up, and future security of supply.

This conjugation ready format makes antibodies ideal for use in many applications including: ELISAs, multiplex assays requiring matched pairs, mass cytometry, and multiplex imaging applications. Antibody use should be optimized by the end user for each application and assay.

Storage

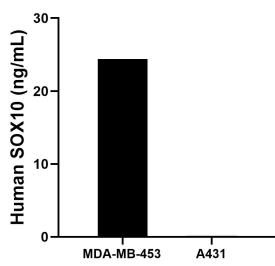
Storage:
Store at -80°C.

Storage Buffer:
PBS only, pH7.3

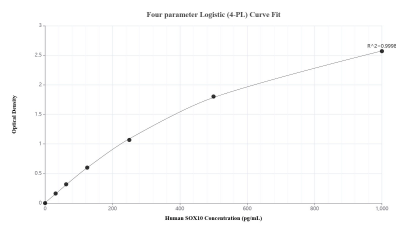
For technical support and original validation data for this product please contact:
T: 1 (888) 4PTGLAB (1-888-478-4522) (toll free in USA), or 1(312) 455-8498 (outside USA)
E: proteintech@ptglab.com
W: ptglab.com

This product is exclusively available under Proteintech Group brand and is not available to purchase from any other manufacturer.

Selected Validation Data



The mean SOX10 concentration was determined to be 24.4 ng/mL in MDA-MB-453 cell extract based on a 1.5 mg/mL extract load and 0.2 ng/mL in A431 cell extract based on a 1.2 mg/mL extract load.



Sandwich ELISA standard curve of MP02850-2, Human SOX10 Recombinant Matched Antibody Pair - PBS only. 87051-3-PBS was coated to a plate as the capture antibody and incubated with serial dilutions of standard Ag38090. 87051-4-PBS was HRP conjugated as the detection antibody. Range: 31.3-1000 pg/mL.