

For Research Use Only

Phospho-TAU (Ser199/202) Recombinant monoclonal antibody, PBS Only

Catalog Number: 87053-2-PBS



Basic Information

Catalog Number:

87053-2-PBS

Size:

100ug, Concentration: 1 mg/ml by
Nanodrop;

Source:

Rabbit

Isotype:

IgG

GenBank Accession Number:

BC000558

GeneID (NCBI):

4137

UNIPROT ID:

P10636

Full Name:

microtubule-associated protein tau

Calculated MW:

37-46, 79-81 kDa

Observed MW:

45-60 kDa

Purification Method:

Protein A purification

CloneNo.:

252389B6

Applications

Tested Applications:

WB, Indirect ELISA

Species Specificity:

human, mouse

Background Information

Tau is hyperphosphorylated during aging and in age-related neurodegenerative diseases such as Alzheimer's disease (AD) and fronto-temporal dementia. Hyperphosphorylation of Tau leads to the formation of neurofibrillary tangles (NFT) in the neurons and glia cells, which is one of the hallmarks of AD.

Storage

Storage:

Store at -80°C.

Storage Buffer:

PBS only, pH7.3

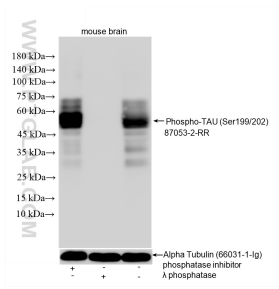
For technical support and original validation data for this product please contact:

T: 1 (888) 4PTGLAB (1-888-478-4522) (toll free
in USA), or 1(312) 455-8498 (outside USA)

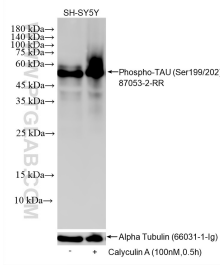
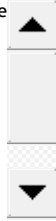
E: proteintech@ptglab.com
W: ptglab.com

This product is exclusively available under Proteintech Group brand and is not available to purchase from any other manufacturer.

Selected Validation Data



Non-treated mouse brain tissue, phosphatase inhibitor treated mouse brain tissue and λ phosphatase treated mouse brain tissue were subjected to SDS PAGE followed by western blot with 87053-2-RR (Phospho-TAU (Ser199/202) antibody) at dilution of 1:20000 incubated at room temperature for 1.5 hours. The membrane was stripped and re-blotted with Alpha Tubulin (66031-1-Ig) antibody as a loading control. This data was developed using the same antibody clone



Non-treated and Calyculin A treated SH-SY5Y cells were subjected to SDS PAGE followed by western blot with 87053-2-RR (Phospho-TAU (Ser199/202) antibody) at dilution of 1:20000 incubated at room temperature for 1 hours. The membrane was stripped and re-blotted with Alpha Tubulin (66031-1-Ig) antibody as a loading control. This data was developed using the same antibody clone with 87053-2-PBS in a different storage buffer formulation.