

For Research Use Only

SAP30BP Recombinant monoclonal antibody, PBS Only (Capture)

Catalog Number: 87054-1-PBS



Basic Information

Catalog Number: 87054-1-PBS	GenBank Accession Number: BC007592	Purification Method: Protein A purification
Size: 100ug, Concentration: 1 mg/ml by Nanodrop;	GeneID (NCBI): 29115	CloneNo.: 252137B1
Source: Rabbit	UNIPROT ID: Q9UHR5	
Isotype: IgG	Full Name: SAP30 binding protein	
Immunogen Catalog Number: AG15051	Calculated MW: 308 aa, 34 kDa	
	Observed MW: 45 kDa	

Applications

Tested Applications:
WB, IF/ICC, Indirect ELISA

Species Specificity:
human, mouse, rat

Product Information

87054-1-PBS targets SAP30BP as part of a matched antibody pair:

MP03025-1: 87054-1-PBS capture and 87054-3-PBS detection (validated in Sandwich ELISA)

Unconjugated rabbit recombinant monoclonal antibody in PBS only (BSA and azide free) storage buffer at a concentration of 1 mg/mL, ready for conjugation. Created using Proteintech's proprietary in-house recombinant technology. Recombinant production enables unrivalled batch-to-batch consistency, easy scale-up, and future security of supply.

This conjugation ready format makes antibodies ideal for use in many applications including: ELISAs, multiplex assays requiring matched pairs, mass cytometry, and multiplex imaging applications. Antibody use should be optimized by the end user for each application and assay.

Background Information

SAP30BP, also named as SAP30-binding protein, is a 308 amino acid protein, which belongs to the HCNGP family. SAP30BP localizes in Nucleus and Interacts with SAP30. DDX54 Induces cell death and may act as a transcriptional corepressor of a gene related to cell survival. SAP30BP may be involved in the regulation of beta-2-microglobulin genes.

Storage

Storage:
Store at -80°C.

Storage Buffer:
PBS only, pH7.3

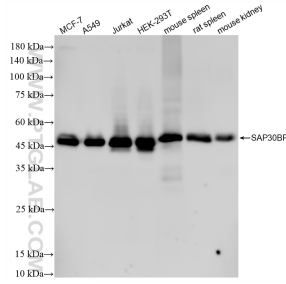
For technical support and original validation data for this product please contact:

T: 1 (888) 4PTGLAB (1-888-478-4522) (toll free in USA), or 1(312) 455-8498 (outside USA)

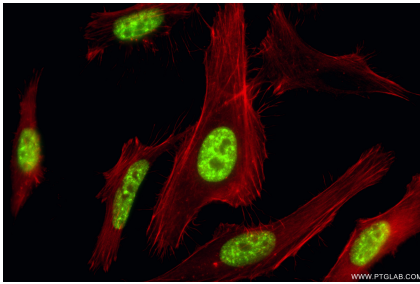
E: proteintech@ptglab.com
W: ptglab.com

This product is exclusively available under Proteintech Group brand and is not available to purchase from any other manufacturer.

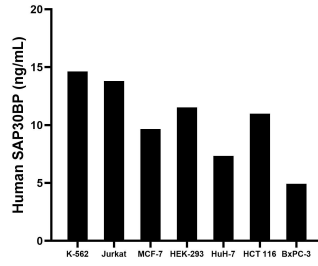
Selected Validation Data



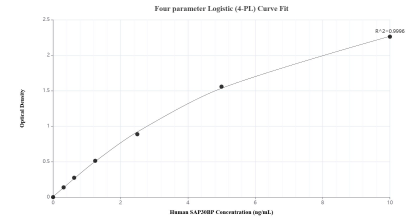
Various lysates were subjected to SDS PAGE followed by western blot with 87054-1-RR (SAP30BP antibody) at dilution of 1:10000 incubated at room temperature for 1.5 hours. This data was developed using the same antibody clone with 87054-1-PBS in a different storage buffer formulation.



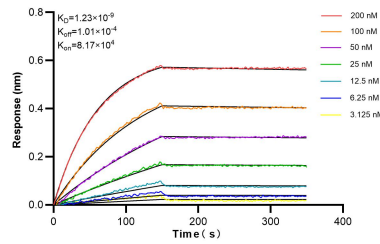
Immunofluorescent analysis of (4% PFA) fixed HeLa cells using SAP30BP antibody (87054-1-RR, Clone: 252137B1) at dilution of 1:1000 and CoraLite@488-Conjugated Goat Anti-Rabbit IgG(H+L) (SA00013-2), CL594-Phalloidin (red). This data was developed using the same antibody clone with 87054-1-PBS in a different storage buffer formulation.



The mean SAP30BP concentration was determined to be 14.64 ng/mL in K-562 cell extract based on a 1.20 mg/mL extract load, 13.81 ng/mL in Jurkat cell extract based on a 1.20 mg/mL extract load, 9.67 ng/mL in MCF-7 cell extract based on a 1.20 mg/mL extract load, 11.54 ng/mL in HEK-293 cell extract based on a 1.20 mg/mL extract load, 7.34 ng/mL in HuH-7 cell extract based on a 1.20 mg/mL extract load, 10.99 ng/mL in HCT 116 cell extract based on a 1.20 mg/mL extract



Sandwich ELISA standard curve of MP03025-1, Human SAP30BP Recombinant Matched Antibody Pair - PBS only. 87054-1-PBS was coated to a plate as the capture antibody and incubated with serial dilutions of standard Ag15051. 87054-3-PBS was HRP conjugated as the detection antibody. Range: 0.313-10 ng/mL.



Biolayer interferometry (BLI) kinetic assays of 87054-1-RR against Human SAP30BP were performed. The affinity constant is 1.23 nM.