

For Research Use Only

# PDLIM3 Recombinant monoclonal antibody, PBS Only (Capture)

Catalog Number: 87058-2-PBS



## Basic Information

<b>Catalog Number:</b> 87058-2-PBS	<b>GenBank Accession Number:</b> BC027870	<b>Purification Method:</b> Protein A purification
<b>Size:</b> 100ug , Concentration: 1 mg/ml by Nanodrop;	<b>GeneID (NCBI):</b> 27295	<b>CloneNo.:</b> 252308B8
<b>Source:</b> Rabbit	<b>UNIPROT ID:</b> Q53GG5	
<b>Isotype:</b> IgG	<b>Full Name:</b> PDZ and LIM domain 3	
<b>Immunogen Catalog Number:</b> AG3934	<b>Calculated MW:</b> 316 aa, 34 kDa	
	<b>Observed MW:</b> 35 kDa	

## Applications

**Tested Applications:**  
WB, Cytometric bead array, Sandwich ELISA, Indirect ELISA

**Species Specificity:**  
human, mouse, rat

## Product Information

87058-2-PBS targets PDLIM3 as part of a matched antibody pair:

MP02852-1: 87058-2-PBS capture and 87058-1-PBS detection (validated in Cytometric bead array, Sandwich ELISA)

Unconjugated rabbit recombinant monoclonal antibody in PBS only (BSA and azide free) storage buffer at a concentration of 1 mg/mL, ready for conjugation. Created using Proteintech's proprietary in-house recombinant technology. Recombinant production enables unrivalled batch-to-batch consistency, easy scale-up, and future security of supply.

This conjugation ready format makes antibodies ideal for use in many applications including: ELISAs, multiplex assays requiring matched pairs, mass cytometry, and multiplex imaging applications. Antibody use should be optimized by the end user for each application and assay.

## Background Information

PDLIM3, also known as ALP, contains a PDZ domain and a LIM domain. PDLIM3 binds the spectrin-like repeats of alpha-actinin-2 and colocalizes with alpha-actinin-2 at the Z lines of skeletal muscle.

## Storage

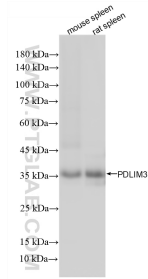
**Storage:**  
Store at -80°C.

**Storage Buffer:**  
PBS only, pH7.3

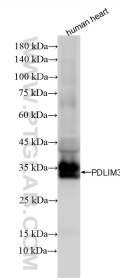
For technical support and original validation data for this product please contact:  
T: 1 (888) 4PTGLAB (1-888-478-4522) (toll free in USA), or 1(312) 455-8498 (outside USA)      E: proteintech@ptglab.com  
W: ptglab.com

**This product is exclusively available under Proteintech Group brand and is not available to purchase from any other manufacturer.**

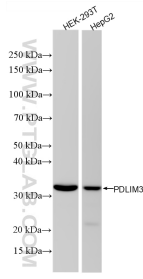
## Selected Validation Data



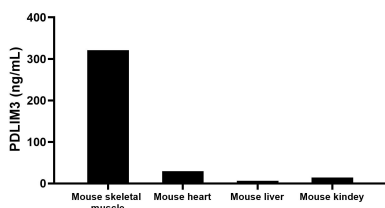
Various lysates were subjected to SDS PAGE followed by western blot with 87058-2-RR (PDLIM3 antibody) at dilution of 1:3000 incubated at room temperature for 1.5 hours. This data was developed using the same antibody clone with 87058-2-PBS in a different storage buffer formulation.



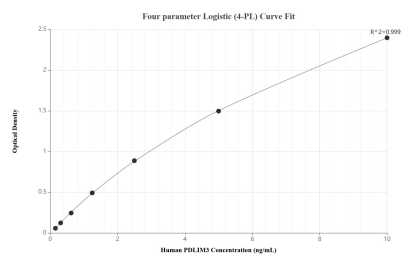
human heart tissue were subjected to SDS PAGE followed by western blot with 87058-2-RR (PDLIM3 antibody) at dilution of 1:3000 incubated at room temperature for 1.5 hours. This data was developed using the same antibody clone with 87058-2-PBS in a different storage buffer formulation.



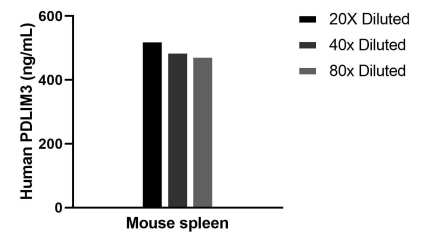
Various lysates were subjected to SDS PAGE followed by western blot with 87058-2-RR (PDLIM3 antibody) at dilution of 1:10000 incubated at room temperature for 1.5 hours. This data was developed using the same antibody clone with 87058-2-PBS in a different storage buffer formulation.



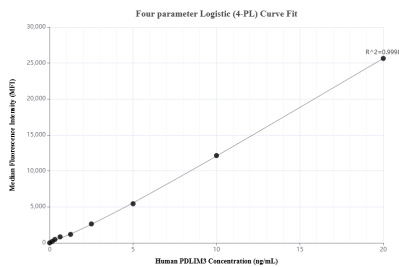
The mean PDLIM3 concentration was determined to be 321.00 ng/mL in mouse skeletal muscle extract based on a 4.10 mg/mL extract load, 29.50 ng/mL in mouse heart extract based on a 5.40 mg/mL extract load, 6.40 ng/mL in mouse liver extract based on a 8.40 mg/mL extract load and 14.40 ng/mL in mouse kidney extract based on a 8.4 mg/mL extract load.



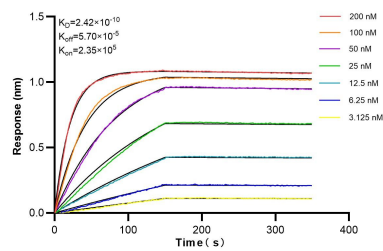
Sandwich ELISA standard curve of MP02852-1, Human PDLIM3 Recombinant Matched Antibody Pair - PBS only. 87058-2-PBS was coated to a plate as the capture antibody and incubated with serial dilutions of standard Ag3934. 87058-1-PBS was HRP conjugated as the detection antibody. Range: 0.156-10 ng/mL



The mean PDLIM3 concentration was determined to be 495.6 ng/mL in mouse spleen tissue extract based on a 6.4 mg/mL extract load.



Cytometric bead array standard curve of MP02852-1, PDLIM3 Recombinant Matched Antibody Pair, PBS Only. Capture antibody: 87058-2-PBS. Detection antibody: 87058-1-PBS. Standard: Ag3934. Range: 0.156-20 ng/mL



Biolayer interferometry (BLI) kinetic assays of 87058-2-RR against Human MCM6 were performed. The affinity constant is 0.242 nM.