

For Research Use Only

# CCL5 Recombinant monoclonal antibody

Catalog Number:87060-4-RR



## Basic Information

<b>Catalog Number:</b> 87060-4-RR	<b>GenBank Accession Number:</b> Q5XZF2	<b>Purification Method:</b> Protein A purification
<b>Size:</b> 100ul , Concentration: 1000 µg/ml by Nanodrop;	<b>GeneID (NCBI):</b> 20304	<b>CloneNo.:</b> 250841C2
<b>Source:</b> Rabbit	<b>UNIPROT ID:</b> P30882	<b>Recommended Dilutions:</b> WB: 1:5000-1:50000 IHC: 1:500-1:2000
<b>Isotype:</b> IgG	<b>Full Name:</b> chemokine (C-C motif) ligand 5	
<b>Immunogen Catalog Number:</b> EG2253	<b>Calculated MW:</b> 10kd	
	<b>Observed MW:</b> 8 kDa	

## Applications

**Tested Applications:**  
WB, IHC, ELISA

**Species Specificity:**  
mouse

**Note-IHC: suggested antigen retrieval with TE buffer pH 9.0; (\*) Alternatively, antigen retrieval may be performed with citrate buffer pH 6.0**

**Positive Controls:**

**WB :** PMA, LPS and Brefeldin A treated RAW 264.7 cells,

**IHC :** mouse spleen tissue, mouse colon tissue

## Background Information

CCL5 (C-C motif chemokine ligand 5), also known as RANTES, is a key inflammatory chemokine that attracts immune cells like T cells, monocytes, and eosinophils to sites of infection or inflammation, playing vital roles in immunity, viral defense (including HIV), and sometimes cancer progression, by binding to receptors like CCR1, CCR3, and CCR5 to signal cell movement and activation, with inhibitors being researched for therapeutic use.

## Storage

**Storage:**

Store at -20°C. Stable for one year after shipment.

**Storage Buffer:**

PBS with 0.02% sodium azide and 50% glycerol, pH7.3

Aliquoting is unnecessary for -20°C storage

**\*\*\* 20ul sizes contain 0.1% BSA**

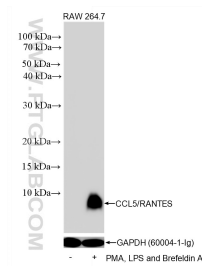
For technical support and original validation data for this product please contact:

T: 1 (888) 4PTGLAB (1-888-478-4522) (toll free in USA), or 1(312) 455-8498 (outside USA)

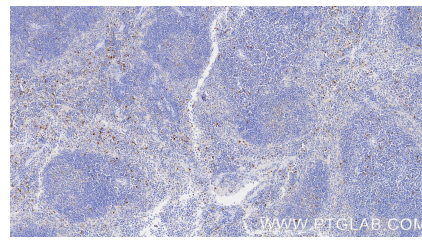
E: [proteintech@ptglab.com](mailto:proteintech@ptglab.com)  
W: [ptglab.com](http://ptglab.com)

**This product is exclusively available under Proteintech Group brand and is not available to purchase from any other manufacturer.**

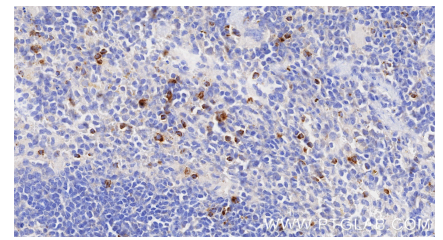
## Selected Validation Data



LPS, PMA, and Brefeldin A-treated RAW 264.7 cells were subjected to SDS PAGE followed by western blot with 87060-4-RR (CCL5 antibody) at dilution of 1:10000 incubated at room temperature for 1.5 hours.



Immunohistochemical analysis of paraffin-embedded mouse spleen tissue slide using 87060-4-RR (CCL5 antibody) at dilution of 1:1000 (under 10x lens). Heat mediated antigen retrieval with Tris-EDTA buffer (pH 9.0).



Immunohistochemical analysis of paraffin-embedded mouse spleen tissue slide using 87060-4-RR (CCL5 antibody) at dilution of 1:1000 (under 40x lens). Heat mediated antigen retrieval with Tris-EDTA buffer (pH 9.0).