

For Research Use Only

Phospho-TAU (Ser396/404) Recombinant monoclonal antibody

Catalog Number:87061-1-RR



Basic Information

Catalog Number: 87061-1-RR	GenBank Accession Number: BC000558	Purification Method: Protein A purification
Size: 100ul , Concentration: 1000 µg/ml by Nanodrop;	GeneID (NCBI): 4137	CloneNo.: 252396E1
Source: Rabbit	UNIPROT ID: P10636	Recommended Dilutions: WB: 1:1000-1:4000
Isotype: IgG	Full Name: microtubule-associated protein tau	
	Calculated MW: 37-46, 79-81 kDa	
	Observed MW: 45-60 kDa	

Applications

Tested Applications: WB, ELISA	Positive Controls: WB : mouse brain tissue,
Species Specificity: human, mouse	

Background Information

Tau isolated from individuals with AD is extensively phosphorylated and more than 40 sites have been reported so far. Hyperphosphorylated tau has an impaired ability to stabilize microtubules, and is capable of self-assembling into aggregates that can template normal tau into filaments, making hyperphosphorylation a clear disease-determining posttranslational modification in tauopathies.

Storage

Storage:
Store at -20°C. Stable for one year after shipment.
Storage Buffer:
PBS with 0.02% sodium azide and 50% glycerol, pH7.3
Aliquoting is unnecessary for -20°C storage

*** 20ul sizes contain 0.1% BSA

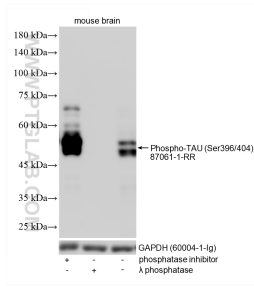
For technical support and original validation data for this product please contact:

T: 1 (888) 4PTGLAB (1-888-478-4522) (toll free
in USA), or 1(312) 455-8498 (outside USA)

E: proteintech@ptglab.com
W: ptglab.com

This product is exclusively available under Proteintech Group brand and is not available to purchase from any other manufacturer.

Selected Validation Data



Non-treated mouse brain tissue, phosphatase inhibitor treated mouse brain tissue and λ phosphatase treated mouse brain tissue were subjected to SDS PAGE followed by western blot with 87061-1-RR (Phospho-TAU(Ser396/404) antibody) at dilution of 1:2000 incubated at room temperature for 1.5 hours. The membrane was stripped and re-blotted with GAPDH (60004-1-Ig) antibody as a loading control.