

For Research Use Only

# MRE11 Recombinant monoclonal antibody

Catalog Number:87066-3-RR



## Basic Information

<b>Catalog Number:</b> 87066-3-RR	<b>GenBank Accession Number:</b> BC005241	<b>Purification Method:</b> Protein A purification
<b>Size:</b> 100ul , Concentration: 1000 µg/ml by Nanodrop;	<b>GeneID (NCBI):</b> 4361	<b>CloneNo.:</b> 252144G6
<b>Source:</b> Rabbit	<b>UNIPROT ID:</b> P49959	<b>Recommended Dilutions:</b> WB: 1:5000-1:50000 IP: 0.5-4.0 ug for 1.0-3.0 mg of total protein lysate
<b>Isotype:</b> IgG	<b>Full Name:</b> MRE11 meiotic recombination 11 homolog A (S. cerevisiae)	
<b>Immunogen Catalog Number:</b> AG1105	<b>Calculated MW:</b> 81 kDa	
	<b>Observed MW:</b> 81 kDa	

## Applications

<b>Tested Applications:</b> WB, IP, ELISA	<b>Positive Controls:</b>
<b>Species Specificity:</b> human, mouse	<b>WB :</b> HeLa cells, HepG2 cells, HEK-293 cells, A431 cells, Jurkat cells, K-562 cells, RAW 264.7 cells
	<b>IP :</b> HeLa cells,

## Background Information

Mre11 (meiotic recombination 11), also named as Mre11A, is a component of the MRN( MRE11/RAD50/NBS1) complex which is a versatile complex, playing a key role in the sensing, processing, and repair of DSBs. MRE11 possesses both endonuclease and 3'-5' exonuclease activity. It contains two DNA-binding domains (DBDs), enabling it to bind both single-stranded DNA (ssDNA) and double-stranded DNA (dsDNA). After DSBs, MRE11 is loaded onto DSBs sites and cleaves DNA by cooperating with CtIP (CtBP [C terminal binding protein] interacting protein) to initiate end resection. It's reported that MRE11 is over-expressed in breast cancers. (PMID:38128537; 22914783)

## Storage

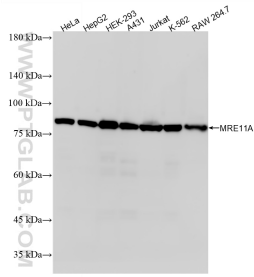
**Storage:**  
Store at -20°C. Stable for one year after shipment.  
**Storage Buffer:**  
PBS with 0.02% sodium azide and 50% glycerol, pH7.3  
**Aliquoting is unnecessary for -20°C storage**

\*\*\* 20ul sizes contain 0.1% BSA

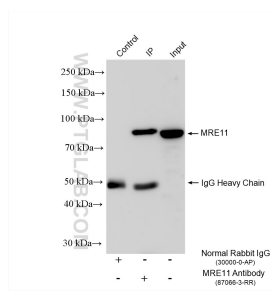
For technical support and original validation data for this product please contact:  
T: 1 (888) 4PTGLAB (1-888-478-4522) (toll free in USA), or 1(312) 455-8498 (outside USA)  
E: proteintech@ptglab.com  
W: ptglab.com

This product is exclusively available under Proteintech Group brand and is not available to purchase from any other manufacturer.

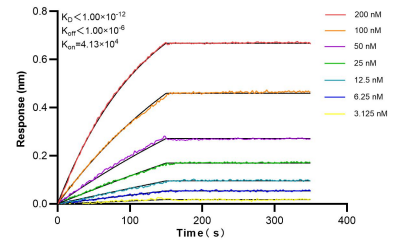
## Selected Validation Data



Various lysates were subjected to SDS PAGE followed by western blot with 87066-3-RR (MRE11A antibody) at dilution of 1:10000 incubated at room temperature for 1.5 hours.



IP result of anti-MRE11 (IP:87066-3-RR, 4ug; Detection:87066-3-RR 1:2000) with HeLa cells lysate 1320 ug.



Bi-layer interferometry (BLI) kinetic assays of 87066-3-RR against Human MRE11 were performed. The affinity constant is below 1 pM.