

For Research Use Only

SCRIB Recombinant monoclonal antibody

Catalog Number:87069-3-RR



Basic Information

Catalog Number: 87069-3-RR	GenBank Accession Number: NM_015356.4	Purification Method: Protein A purification
Size: 100ul , Concentration: 1000 ug/ml by Nanodrop;	GeneID (NCBI): 23513	CloneNo.: 252246F10
Source: Rabbit	UNIPROT ID: Q14160	Recommended Dilutions: WB: 1:5000-1:50000
Isotype: IgG	Full Name: scribbled homolog (Drosophila)	
Immunogen Catalog Number: EG6543	Calculated MW: 175 kDa	
	Observed MW: 260 kDa	

Applications

Tested Applications:
WB, ELISA

Species Specificity:
human, mouse, rat

Positive Controls:

WB : HeLa cells, HCT 116 cells, SKOV-3 cells, MCF-7 cells, PC-3 cells, NIH/3T3 cells, HSC-T6 cells

Background Information

SCRIB encodes a large, 260-kDa cytoplasmic scaffolding protein that comprises a large leucine-rich repeat (LRR) region and 4 PDZ domains that regulate protein-protein interactions. In mammals, cell polarity is established and maintained by at least 3 protein modules (Scrib, Crumbs, and Par). The apical (Crumbs and Par) and basolateral (Scrib) modules function in a mutually antagonistic relationship to regulate various polarization processes such as apical-basal polarity, planar cell polarity, asymmetric cell division and migration. The loss of SCRIB in malignant tumors suggest that it has potential to be a tumor suppressor. Alteration of polarity through deletion, downregulation, overexpression, and mislocalization can induce structural and functional alteration of cells that might be related to tumorigenesis. Mislocalization of SCRIB is involved in epithelial-to-mesenchymal transition (EMT) by inducing loss of E-cadherin. Deregulated SCRIB expression induces tumorigenesis in breast and liver. (PMID: 28460446, PMID: 32564009)

Storage

Storage:

Store at -20°C. Stable for one year after shipment.

Storage Buffer:

PBS with 0.02% sodium azide and 50% glycerol, pH7.3

Aliquoting is unnecessary for -20°C storage

***** 20ul sizes contain 0.1% BSA**

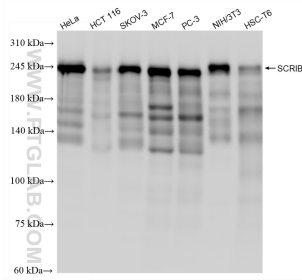
For technical support and original validation data for this product please contact:

T: 1 (888) 4PTGLAB (1-888-478-4522) (toll free in USA), or 1(312) 455-8498 (outside USA)

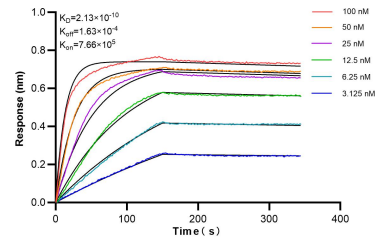
E: proteintech@ptglab.com
W: ptglab.com

This product is exclusively available under Proteintech Group brand and is not available to purchase from any other manufacturer.

Selected Validation Data



Various lysates were subjected to SDS PAGE followed by western blot with 87069-3-RR (SCRI B antibody) at dilution of 1:40000 incubated at room temperature for 1.5 hours.



Biolayer interferometry (BLI) kinetic assays of 87069-3-RR against Human SCRI B were performed. The affinity constant is 0.213 nM.