

For Research Use Only

CAD13 Recombinant monoclonal antibody, PBS Only (Detector)

Catalog Number:87073-3-PBS



Basic Information

Catalog Number: 87073-3-PBS	GenBank Accession Number: NM_001257.4	Purification Method: Protein A purification
Size: 100ug , Concentration: 1 mg/ml by Nanodrop;	GeneID (NCBI): 1012	CloneNo.: 252245D6
Source: Rabbit	UNIPROT ID: P55290-1	
Isotype: IgG	Full Name: cadherin 13, H-cadherin (heart)	
Immunogen Catalog Number: EG5964	Calculated MW: 78 kDa	

Applications

Tested Applications:
Sandwich ELISA, Indirect ELISA

Species Specificity:
human

Product Information

87073-3-PBS targets CAD13 as part of a matched antibody pair.

MP02902-1: 87073-4-PBS capture and 87073-3-PBS detection (validated in Sandwich ELISA)

Unconjugated rabbit recombinant monoclonal antibody in PBS only (BSA and azide free) storage buffer at a concentration of 1 mg/mL, ready for conjugation. Created using Proteintech's proprietary in-house recombinant technology. Recombinant production enables unrivalled batch-to-batch consistency, easy scale-up, and future security of supply.

This conjugation ready format makes antibodies ideal for use in many applications including: ELISAs, multiplex assays requiring matched pairs, mass cytometry, and multiplex imaging applications. Antibody use should be optimized by the end user for each application and assay.

Storage

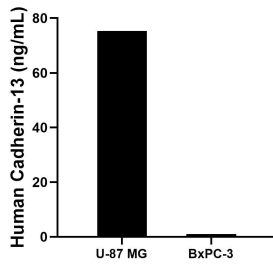
Storage:
Store at -80°C.

Storage Buffer:
PBS only, pH7.3

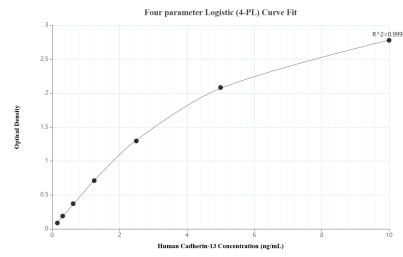
For technical support and original validation data for this product please contact:
T: 1 (888) 4PTGLAB (1-888-478-4522) (toll free in USA), or 1(312) 455-8498 (outside USA) E: proteintech@ptglab.com
W: ptglab.com

This product is exclusively available under Proteintech Group brand and is not available to purchase from any other manufacturer.

Selected Validation Data



The mean Cadherin-13 concentration was determined to be 75.33 ng/mL in U-87MG cell extract based on a 1.50 mg/mL extract load and 1.02 ng/mL in BxPC-3 cell extract based on a 1.20 mg/mL extract load.



Sandwich ELISA standard curve of MP02902-1, Human Cadherin-13 Recombinant Matched Antibody Pair - PBS only. 87073-4-PBS was coated to a plate as the capture antibody and incubated with serial dilutions of standard Eg5964. 87073-3-PBS was HRP conjugated as the detection antibody. Range: 0.156-10 ng/mL.