

For Research Use Only

KIF3C Recombinant monoclonal antibody, PBS Only

Catalog Number:87075-1-PBS



Basic Information

Catalog Number: 87075-1-PBS	GenBank Accession Number: BC042486	Purification Method: Protein A purification
Size: 100ug , Concentration: 1 mg/ml by Nanodrop;	GeneID (NCBI): 3797	CloneNo.: 252142C8
Source: Rabbit	UNIPROT ID: O14782	
Isotype: IgG	Full Name: kinesin family member 3C	
Immunogen Catalog Number: AG5619	Calculated MW: 89 kDa	
	Observed MW: 100 kDa	

Applications

Tested Applications:
WB, Indirect ELISA

Species Specificity:
human, mouse

Background Information

KIF3C(Kinesin Family Member 3C) is a member of Kinesin-2 family, which belongs to microtubule-dependent motor protein. It can generate mechanical energy by hydrolyzing ATP, and regulate many processes such as intracellular transport, cytoskeleton dynamics, cell division and migration. It plays an important role in nervous system, tumor and other tissues, and has gradually become a hot target of cancer and neurodegenerative diseases in recent years.

Storage

Storage:
Store at -80°C.
Storage Buffer:
PBS only, pH7.3

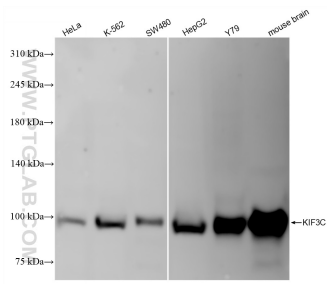
For technical support and original validation data for this product please contact:

T: 1 (888) 4PTGLAB (1-888-478-4522) (toll free in USA), or 1(312) 455-8498 (outside USA)

E: proteintech@ptglab.com
W: ptglab.com

This product is exclusively available under Proteintech Group brand and is not available to purchase from any other manufacturer.

Selected Validation Data



Various lysates were subjected to SDS PAGE followed by western blot with 87075-1-RR (KIF3C antibody) at dilution of 1:5000 incubated at room temperature for 1.5 hours. This data was developed using the same antibody clone with 87075-1-PBS in a different storage buffer formulation.