

For Research Use Only

# KIF3C Recombinant monoclonal antibody

Catalog Number:87075-1-RR



## Basic Information

<b>Catalog Number:</b> 87075-1-RR	<b>GenBank Accession Number:</b> BC042486	<b>Purification Method:</b> Protein A purification
<b>Size:</b> 100ul , Concentration: 1000 µg/ml by Nanodrop;	<b>GeneID (NCBI):</b> 3797	<b>CloneNo.:</b> 252142C8
<b>Source:</b> Rabbit	<b>UNIPROT ID:</b> O14782	<b>Recommended Dilutions:</b> WB: 1:2000-1:10000
<b>Isotype:</b> IgG	<b>Full Name:</b> kinesin family member 3C	
<b>Immunogen Catalog Number:</b> AG5619	<b>Calculated MW:</b> 89 kDa	
	<b>Observed MW:</b> 100 kDa	

## Applications

<b>Tested Applications:</b> WB, ELISA	<b>Positive Controls:</b> WB : HeLa cells, K-562 cells, SW480 cells, HepG2 cells, Y79 cells, mouse brain tissue
<b>Species Specificity:</b> human, mouse	

## Background Information

KIF3C(Kinesin Family Member 3C) is a member of Kinesin-2 family, which belongs to microtubule-dependent motor protein. It can generate mechanical energy by hydrolyzing ATP, and regulate many processes such as intracellular transport, cytoskeleton dynamics, cell division and migration. It plays an important role in nervous system, tumor and other tissues, and has gradually become a hot target of cancer and neurodegenerative diseases in recent years.

## Storage

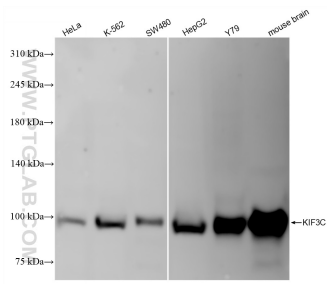
**Storage:**  
Store at -20°C. Stable for one year after shipment.  
**Storage Buffer:**  
PBS with 0.02% sodium azide and 50% glycerol, pH7.3  
Aliquoting is unnecessary for -20°C storage

\*\*\* 20ul sizes contain 0.1% BSA

For technical support and original validation data for this product please contact:  
T: 1 (888) 4PTGLAB (1-888-478-4522) (toll free in USA), or 1(312) 455-8498 (outside USA)      E: proteintech@ptglab.com  
W: ptglab.com

This product is exclusively available under Proteintech Group brand and is not available to purchase from any other manufacturer.

## Selected Validation Data



Various lysates were subjected to SDS PAGE followed by western blot with 87075-1-RR (KIF3C antibody) at dilution of 1:5000 incubated at room temperature for 1.5 hours.