

For Research Use Only

RNF6 Recombinant monoclonal antibody

Catalog Number: 87086-1-RR



Basic Information

Catalog Number: 87086-1-RR	GenBank Accession Number: BC034688	Purification Method: Protein A purification
Size: 100ul , Concentration: 1000 µg/ml by Nanodrop;	GeneID (NCBI): 6049	CloneNo.: 252272C7
Source: Rabbit	UNIPROT ID: Q9Y252	Recommended Dilutions: WB: 1:1000-1:6000
Isotype: IgG	Full Name: ring finger protein (C3H2C3 type) 6	
Immunogen Catalog Number: AG14209	Calculated MW: 685 aa, 78 kDa	
	Observed MW: 75-78 kDa	

Applications

Tested Applications: WB, ELISA	Positive Controls: WB : PC-3 cells, SKOV-3 cells, Sp2/0 cells
Species Specificity: human, rat	

Background Information

RNF6 was firstly cloned in a genetic study of chromosomal rearrangements in myeloproliferative disorders, mapping to chromosome 13q12.12 [PMID:10331950]. It containing a coiled-coil domain at the N-terminus, and a RING-H2 finger at the C-terminus which is responsible for its ubiquitin ligase activity. It also activate Inha gene expression by participating in a protein complex binding to the promoter region [PMID:11971979]. In addition, LIMK1 is a substrate of RNF6 and the RNF6-induced LIMK1 polyubiquitination is mediated via K48 of ubiquitin and leads to proteasomal degradation of the kinase [PMID:16204183].

Storage

Storage:
Store at -20°C. Stable for one year after shipment.
Storage Buffer:
PBS with 0.02% sodium azide and 50% glycerol, pH7.3
Aliquoting is unnecessary for -20°C storage

*** 20ul sizes contain 0.1% BSA

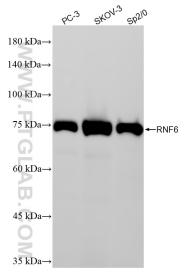
For technical support and original validation data for this product please contact:

T: 1 (888) 4PTGLAB (1-888-478-4522) (toll free in USA), or 1(312) 455-8498 (outside USA)

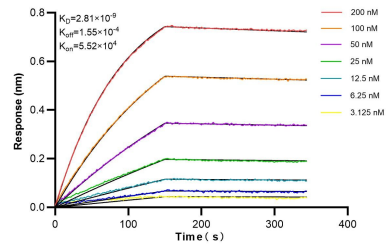
E: proteintech@ptglab.com
W: ptglab.com

This product is exclusively available under Proteintech Group brand and is not available to purchase from any other manufacturer.

Selected Validation Data



Various lysates were subjected to SDS PAGE followed by western blot with 87086-1-RR (RNF6 antibody) at dilution of 1:3000 incubated at room temperature for 1.5 hours.



Biolayer interferometry (BLI) kinetic assays of 87086-1-RR against Human RNF6 were performed. The affinity constant is 2.81 nM.