

For Research Use Only

# Phospho-MYPT1 (Thr853) Recombinant monoclonal antibody, PBS Only

Catalog Number:87088-1-PBS



## Basic Information

<b>Catalog Number:</b> 87088-1-PBS	<b>GenBank Accession Number:</b> BC111752	<b>Purification Method:</b> Protein A purification
<b>Size:</b> 100ug , Concentration: 1 mg/ml by Nanodrop;	<b>GeneID (NCBI):</b> 4659	<b>CloneNo.:</b> 252239E11
<b>Source:</b> Rabbit	<b>UNIPROT ID:</b> O14974	
<b>Isotype:</b> IgG	<b>Full Name:</b> protein phosphatase 1, regulatory (inhibitor) subunit 12A	
	<b>Calculated MW:</b> 1030 aa, 115 kDa	
	<b>Observed MW:</b> 140 kDa	

## Applications

**Tested Applications:**  
WB, Indirect ELISA

**Species Specificity:**  
human, rat

## Background Information

Myosin phosphatase target subunit 1(MYPT1), which is also called PPP1R12A, is one of the subunits of myosin phosphatase. Phospho-MYPT1 (Thr853) is a phosphorylated form of MYPT1 (myosin phosphatase target subunit 1) at threonine 853. This phosphorylation event is associated with the regulation of smooth muscle contraction and cell motility. The Rho-associated protein kinase (ROCK) is known to phosphorylate MYPT1 at Thr853, which in turn suppresses the activity of myosin light chain phosphatase (MLCP), leading to an increase in myosin light chain phosphorylation and subsequent smooth muscle contraction. (PMID: 24712327)

## Storage

**Storage:**  
Store at -80°C.

**Storage Buffer:**  
PBS only, pH7.3

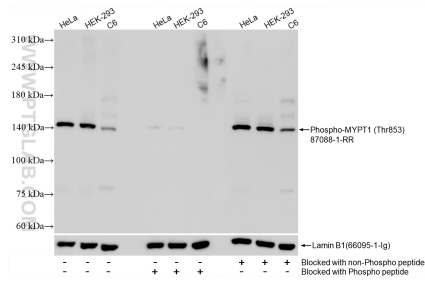
For technical support and original validation data for this product please contact:

T: 1 (888) 4PTGLAB (1-888-478-4522) (toll free in USA), or 1(312) 455-8498 (outside USA)

E: [proteintech@ptglab.com](mailto:proteintech@ptglab.com)  
W: [ptglab.com](http://ptglab.com)

**This product is exclusively available under Proteintech Group brand and is not available to purchase from any other manufacturer.**

## Selected Validation Data



HeLa cells, HEK-293 cells and C6 cells were subjected to SDS PAGE followed by western blot with 87088-1-RR (Phospho-MYPT1 (Thr853) antibody) blocked with BSA only, Phospho-MYPT1 (Thr853) peptide or non-Phospho peptide at dilution of 1:2000 incubated at room temperature for 1.5 hours. The membrane was stripped and re-blotted with Lamin B1 antibody (66095-1-Ig) as loading control. This data was developed using the same antibody clone with 87088-1-

