

For Research Use Only

# RPS7 Recombinant monoclonal antibody

Catalog Number:87092-1-RR



## Basic Information

<b>Catalog Number:</b> 87092-1-RR	<b>GenBank Accession Number:</b> BC061901	<b>Purification Method:</b> Protein A purification
<b>Size:</b> 100ul , Concentration: 1000 µg/ml by Nanodrop;	<b>GeneID (NCBI):</b> 6201	<b>CloneNo.:</b> 252258A12
<b>Source:</b> Rabbit	<b>UNIPROT ID:</b> P62081	<b>Recommended Dilutions:</b> WB: 1:5000-1:50000 IF/ICC: 1:250-1:1000
<b>Isotype:</b> IgG	<b>Full Name:</b> ribosomal protein S7	
<b>Immunogen Catalog Number:</b> AG5999	<b>Calculated MW:</b> 22 kDa	
	<b>Observed MW:</b> 22-25 kDa	

## Applications

<b>Tested Applications:</b> WB, IF/ICC, ELISA	<b>Positive Controls:</b>
<b>Species Specificity:</b> human, mouse, rat	<b>WB :</b> HuH-7 cells, HT-29 cells, LoVo cells, HCT 116 cells, HepG2 cells, NIH/3T3 cells, rat liver tissue
	<b>IF/ICC :</b> HepG2 cells,

## Background Information

Ribosomal protein S7(RPS7) belongs to the RPs, which is structural component of the ribosome involved in protein synthesis. It interacts with and inhibits mdm2 mediated p53 degradation function. Also RPS7 has an essential role in early development. RPS7 is involved in the maturation of ribosomal RNAs in the large or the small ribosomal subunit production pathway.

## Storage

**Storage:**  
Store at -20°C. Stable for one year after shipment.  
**Storage Buffer:**  
PBS with 0.02% sodium azide and 50% glycerol, pH7.3  
Aliquoting is unnecessary for -20°C storage

\*\*\* 20ul sizes contain 0.1% BSA

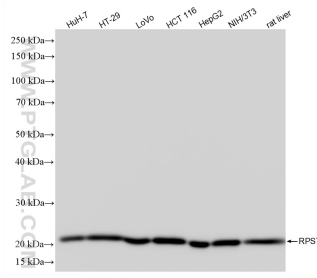
For technical support and original validation data for this product please contact:

T: 1 (888) 4PTGLAB (1-888-478-4522) (toll free in USA), or 1(312) 455-8498 (outside USA)

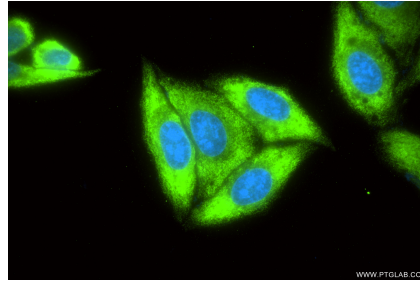
E: [proteintech@ptglab.com](mailto:proteintech@ptglab.com)  
W: [ptglab.com](http://ptglab.com)

This product is exclusively available under Proteintech Group brand and is not available to purchase from any other manufacturer.

## Selected Validation Data



Various lysates were subjected to SDS PAGE followed by western blot with 87092-1-RR (RPS7 antibody) at dilution of 1:10000 incubated at room temperature for 1.5 hours.



Immunofluorescent analysis of (-20°C Ethanol) fixed HepG2 cells using RPS7 antibody (87092-1-RR, Clone: 252258A12) at dilution of 1:500 and Multi-rAb CoraLite® Plus 488-Goat Anti-Rabbit Recombinant Secondary Antibody (H+L) (RGAR002).