

For Research Use Only

HN1L Recombinant monoclonal antibody

Catalog Number:87093-1-RR



Basic Information

Catalog Number: 87093-1-RR	GenBank Accession Number: BC014438	Purification Method: Protein A purification
Size: 100ul , Concentration: 1000 µg/ml by Nanodrop;	GeneID (NCBI): 90861	CloneNo.: 252262C12
Source: Rabbit	UNIPROT ID: Q9H910	Recommended Dilutions: WB: 1:5000-1:50000
Isotype: IgG	Full Name: hematological and neurological expressed 1-like	
Immunogen Catalog Number: AG9400	Calculated MW: 190 aa, 20 kDa	
	Observed MW: 20 kDa	

Applications

Tested Applications: WB, ELISA	Positive Controls: WB : HeLa cells, A549 cells, Jurkat cells, HEK-293 cells
Species Specificity: human	

Background Information

Hematological and neurological expressed 1-like protein (HN1L), also known as Jupiter microtubule-associated homolog 2 (JPT2), belongs to the jupiter family. HN1L is nicotinic acid adenine dinucleotide phosphate (NAADP) binding protein required for NAADP-evoked intracellular calcium release (PubMed:33758061). HN1L enables NAADP to activate Ca²⁺ release from the endoplasmic reticulum through ryanodine receptors (PubMed:33758062). HN1L was also required for the translocation of a severe acute respiratory syndrome coronavirus 2 (SARS-CoV-2) pseudovirus through the endolysosomal system HN1L is expressed in liver, kidney, prostate, testis and uterus (PMID: 15094197).

Storage

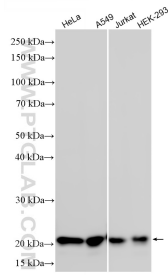
Storage:
Store at -20°C. Stable for one year after shipment.
Storage Buffer:
PBS with 0.02% sodium azide and 50% glycerol, pH7.3
Aliquoting is unnecessary for -20°C storage

*** 20ul sizes contain 0.1% BSA

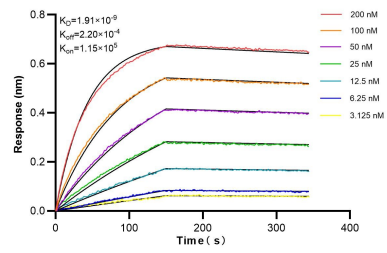
For technical support and original validation data for this product please contact:
T: 1 (888) 4PTGLAB (1-888-478-4522) (toll free in USA), or 1(312) 455-8498 (outside USA) E: proteintech@ptglab.com
W: ptglab.com

This product is exclusively available under Proteintech Group brand and is not available to purchase from any other manufacturer.

Selected Validation Data



Various lysates were subjected to SDS PAGE followed by western blot with 87093-1-RR (HN1L antibody) at dilution of 1:10000 incubated at room temperature for 1.5 hours.



Biolayer interferometry (BLI) kinetic assays of 87093-1-RR against Human HN1L were performed. The affinity constant is 1.91 nM.