

For Research Use Only

GPR37 Recombinant monoclonal antibody

Catalog Number: 87095-1-RR



Basic Information

Catalog Number: 87095-1-RR	GenBank Accession Number: NM_005302.5	Purification Method: Protein A purification
Size: 100ul , Concentration: 1000 µg/ml by Nanodrop;	GeneID (NCBI): 2861	CloneNo.: 252205H3
Source: Rabbit	UNIPROT ID: O15354	Recommended Dilutions: WB: 1:1000-1:6000
Isotype: IgG	Full Name: G protein-coupled receptor 37 (endothelin receptor type B-like)	
Immunogen Catalog Number: EG5426	Calculated MW: 67 kDa	
	Observed MW: 67 kDa	

Applications

Tested Applications: WB, ELISA	Positive Controls: WB : K-562 cells,
Species Specificity: human	

Background Information

The orphan G protein-coupled receptor GPR37, also known as PAELR (parkin-associated endothelin receptor-like receptor) or ETBR-LP-1 (endothelin B receptor-like protein 1), is a 613 aa, multi-pass membrane protein predominantly expressed in the brain. It is a substrate of parkin (PARK2). When overexpressed in cells, GPR37 tends to become insoluble, unfolded, and ubiquitinated in vivo. Accumulation of the unfolded protein may lead to dopaminergic neuronal death in juvenile Parkinson disease (JPD). This antibody recognizes endogenous GPR37, which migrates as an approximately 50-55 kDa band in SDS-PAGE (PMID:17519329).

Storage

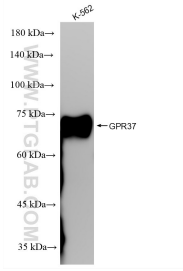
Storage:
Store at -20°C. Stable for one year after shipment.
Storage Buffer:
PBS with 0.02% sodium azide and 50% glycerol, pH7.3
Aliquoting is unnecessary for -20°C storage

*** 20ul sizes contain 0.1% BSA

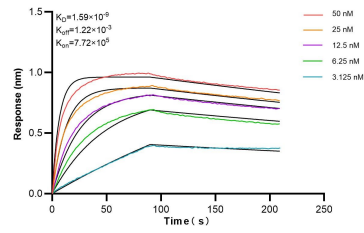
For technical support and original validation data for this product please contact:
T: 1 (888) 4PTGLAB (1-888-478-4522) (toll free in USA), or 1(312) 455-8498 (outside USA)
E: proteintech@ptglab.com
W: ptglab.com

This product is exclusively available under Proteintech Group brand and is not available to purchase from any other manufacturer.

Selected Validation Data



K-562 cells lysates were subjected to SDS PAGE followed by western blot with 87095-1-RR (GPR37 antibody) at dilution of 1:3000 incubated at room temperature for 1.5 hours.



Biolayer interferometry (BLI) kinetic assays of 87095-1-RR against Human GPR37 were performed. The affinity constant is 1.59 nM.