

For Research Use Only

Phospho-HER2/ErbB2 (Tyr1248) Recombinant monoclonal antibody, PBS Only



Catalog Number: 87096-1-PBS

Basic Information

Catalog Number: 87096-1-PBS	GenBank Accession Number: BC156755	Purification Method: Protein A purification
Size: 100ug, Concentration: 1 mg/ml by Nanodrop;	GeneID (NCBI): 2064	CloneNo.: 252184A1
Source: Rabbit	UNIPROT ID: P04626	
Isotype: IgG	Full Name: v-erb-b2 erythroblastic leukemia viral oncogene homolog 2, neuro/glioblastoma derived oncogene homolog (avian)	
	Calculated MW: 1255 aa, 138 kDa	
	Observed MW: 185 kDa	

Applications

Tested Applications:
WB, Indirect ELISA

Species Specificity:
human

Background Information

HER2, also known as ErbB2 and Neu, is a 185-kDa transmembrane glycoprotein that is a member of the epidermal growth factor (EGF) receptor family of receptor tyrosine kinases. Phospho-HER2/ErbB2 (Tyr1248) is a phosphorylated form of the HER2 protein, which is a member of the epidermal growth factor receptor (EGFR) family. This phosphorylation event is considered a prerequisite for HER2 signaling and its transforming activity. The phosphorylation of HER2 at Tyr1248 residue is a key step in the activation of downstream signaling cascades that regulate various cellular processes, including cell growth, proliferation, and survival. Tyrosine 1248 is the main autophosphorylation site in the carboxy terminal domain of ErbB2 linked to downstream signaling through the ras-raf-MEK-p42/44 MAPK signal transduction pathway. (PMID: 19084911)

Storage

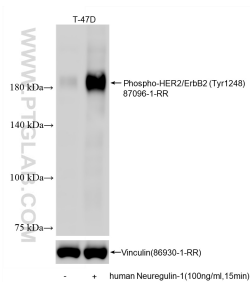
Storage:
Store at -80°C.

Storage Buffer:
PBS only, pH7.3

For technical support and original validation data for this product please contact:
T: 1 (888) 4PTGLAB (1-888-478-4522) (toll free in USA), or 1(312) 455-8498 (outside USA) E: proteintech@ptglab.com W: ptglab.com

This product is exclusively available under Proteintech Group brand and is not available to purchase from any other manufacturer.

Selected Validation Data



Non-treated T-47D cells and human Neuregulin-1 treated T-47D cells were subjected to SDS PAGE followed by western blot with 87096-1-RR (Phospho-HER2/ErbB2 (Tyr1248) antibody) at dilution of 1:2000 incubated at room temperature for 1.5 hours. The membrane was stripped and re-blotted with Vinculin (86930-1-RR) antibody as a loading control. This data was developed using the same antibody clone with 87096-1-PBS in a different storage buffer formulation.