

For Research Use Only

# CD21 Recombinant monoclonal antibody

Catalog Number: 87097-1-RR



## Basic Information

Catalog Number:	87097-1-RR	GenBank Accession Number:	NM_001877.5	Purification Method:	Protein A purification
Size:	100ul , Concentration: 1000 µg/ml by Nanodrop;	GeneID (NCBI):	1380	CloneNo.:	252181F1
Source:	Rabbit	ENSEMBL Gene ID:	ENSG00000117322	Recommended Dilutions:	WB: 1:1000-1:4000
Isotype:	IgG	UNIPROT ID:	P20023-1		
Immunogen Catalog Number:	EG2980	Full Name:	complement component (3d/Epstein Barr virus) receptor 2		
		Calculated MW:	113 kDa		
		Observed MW:	150 kDa		

## Applications

Tested Applications:	WB, ELISA	Positive Controls:	WB : Raji cells,
Species Specificity:	human		

## Background Information

CD21, also known as complement receptor type 2 (CR2), complement C3d receptor, and Epstein-Barr virus receptor, is a transmembrane protein that contains a small cytoplasmic domain, a transmembrane region and an extracellular domain consisting of 15 tandem short consensus repeat sequences (PMID: 6230668; 2551147). It is expressed on B cells, follicular dendritic cells, thymocytes and a subset of peripheral T cells (PMID: 26119182). CD21 binds complement fragments C3d, C3dg and iC3b and acts as a receptor for the Epstein-Barr virus (PMID: 7753047). On B cells, together with CD19 and CD81, CD21 forms a complex that functions as a co-receptor to the BCR (PMID: 7542009). It is involved in B cells activation and functions.

## Storage

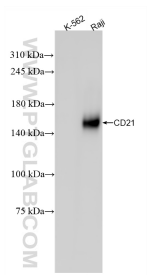
**Storage:**  
Store at -20°C. Stable for one year after shipment.  
**Storage Buffer:**  
PBS with 0.02% sodium azide and 50% glycerol, pH7.3  
Aliquoting is unnecessary for -20°C storage

\*\*\* 20ul sizes contain 0.1% BSA

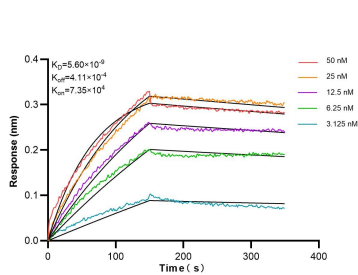
For technical support and original validation data for this product please contact:  
T: 1 (888) 4PTGLAB (1-888-478-4522) (toll free in USA), or 1(312) 455-8498 (outside USA)  
E: [proteintech@ptglab.com](mailto:proteintech@ptglab.com)  
W: [ptglab.com](http://ptglab.com)

This product is exclusively available under Proteintech Group brand and is not available to purchase from any other manufacturer.

## Selected Validation Data



Raji cells were subjected to SDS PAGE followed by western blot with 87097-1-RR (CR2 antibody) at dilution of 1:2000 incubated at room temperature for 1.5 hours.



Biolayer interferometry (BLI) kinetic assays of 87097-1-RR against Human CD21 were performed. The affinity constant is 5.60 nM.