

For Research Use Only

CD21 Recombinant monoclonal antibody, PBS Only (Capture)

Catalog Number: 87097-3-PBS



Basic Information

Catalog Number: 87097-3-PBS	GenBank Accession Number: NM_001877.5	Purification Method: Protein A purification
Size: 100ug , Concentration: 1 mg/ml by Nanodrop;	GeneID (NCBI): 1380	CloneNo.: 252181G8
Source: Rabbit	ENSEMBL Gene ID: ENSG00000117322	
Isotype: IgG	UNIPROT ID: P20023-1	
Immunogen Catalog Number: EG2980	Full Name: complement component (3d/Epstein Barr virus) receptor 2	
	Calculated MW: 113 kDa	

Applications

Tested Applications:
Cytometric bead array, Sandwich ELISA, Indirect ELISA

Species Specificity:
human

Product Information

87097-3-PBS targets CD21 as part of a matched antibody pair:

MP02864-1: 87097-3-PBS capture and 87097-2-PBS detection (validated in Cytometric bead array)

MP02864-2: 87097-3-PBS capture and 87097-1-PBS detection (validated in Sandwich ELISA)

Unconjugated rabbit recombinant monoclonal antibody in PBS only (BSA and azide free) storage buffer at a concentration of 1 mg/mL, ready for conjugation. Created using Proteintech's proprietary in-house recombinant technology. Recombinant production enables unrivalled batch-to-batch consistency, easy scale-up, and future security of supply.

This conjugation ready format makes antibodies ideal for use in many applications including: ELISAs, multiplex assays requiring matched pairs, mass cytometry, and multiplex imaging applications. Antibody use should be optimized by the end user for each application and assay.

Storage

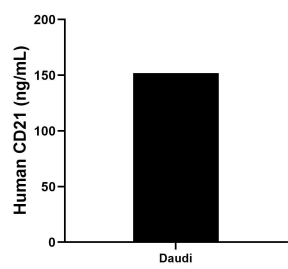
Storage:
Store at -80°C.

Storage Buffer:
PBS only, pH7.3

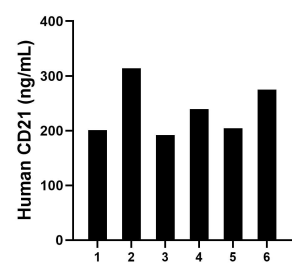
For technical support and original validation data for this product please contact:
T: 1 (888) 4PTGLAB (1-888-478-4522) (toll free in USA), or 1(312) 455-8498 (outside USA)
E: proteintech@ptglab.com
W: ptglab.com

This product is exclusively available under Proteintech Group brand and is not available to purchase from any other manufacturer.

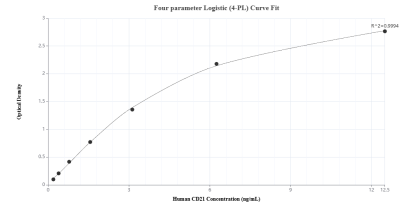
Selected Validation Data



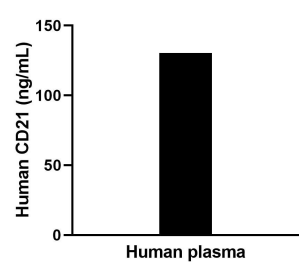
The mean CD21 concentration was determined to be 152.00 ng/mL in Daudi cell extract based on a 1.8 mg/mL extract load.



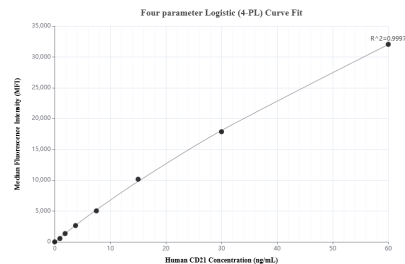
Plasma of six individual healthy human donors was measured. The human CD21 concentration of detected samples was determined to be 7.29 ng/mL with a range of 3.90 - 9.46 ng/mL.



Sandwich ELISA standard curve of MP02864-2, Human CD21 Recombinant Matched Antibody Pair - PBS only. 87097-3-PBS was coated to a plate as the capture antibody and incubated with serial dilutions of standard Eg2980. 87097-1-PBS was HRP conjugated as the detection antibody. Range: 0.195-12.5 ng/mL



The mean CD21 concentration was determined to be 131.8 ng/mL in human plasma.



Cytometric bead array standard curve of MP02864-1, CD21 Recombinant Matched Antibody Pair, PBS Only. Capture antibody: 87097-3-PBS. Detection antibody: 87097-2-PBS. Standard: Eg2980. Range: 0.938-60 ng/mL.