

For Research Use Only

TJAP1 Recombinant monoclonal antibody, PBS Only

Catalog Number:87106-3-PBS



Basic Information

Catalog Number: 87106-3-PBS	GenBank Accession Number: BC064401	Purification Method: Protein A purification
Size: 100ug , Concentration: 1 mg/ml by Nanodrop;	GeneID (NCBI): 93643	CloneNo.: 252301G9
Source: Rabbit	UNIPROT ID: Q5JTD0	
Isotype: IgG	Full Name: tight junction associated protein 1 (peripheral)	
Immunogen Catalog Number: AG12174	Calculated MW: 547 aa, 61 kDa	
	Observed MW: 86-90 kDa	

Applications

Tested Applications:
WB, IF/ICC, Indirect ELISA

Species Specificity:
human, mouse, rat

Background Information

TJAP1, also named as PILT and TJP4, is colocalized at the tight junctions. TJAP1 has some forms with MW 60 kDa (native) and 86-90 kDa (modified).

Storage

Storage:
Store at -80°C.

Storage Buffer:
PBS only, pH7.3

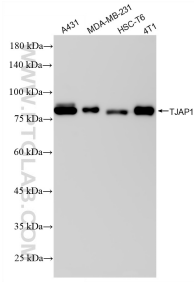
For technical support and original validation data for this product please contact:

T: 1 (888) 4PTGLAB (1-888-478-4522) (toll free in USA), or 1(312) 455-8498 (outside USA)

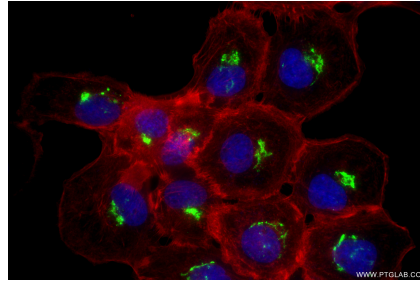
E: proteintech@ptglab.com
W: ptglab.com

This product is exclusively available under Proteintech Group brand and is not available to purchase from any other manufacturer.

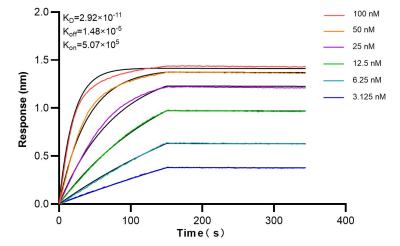
Selected Validation Data



Various lysates were subjected to SDS PAGE followed by western blot with 87106-3-RR (TJP1 antibody) at dilution of 1:5000 incubated at room temperature for 1.5 hours. This data was developed using the same antibody clone with 87106-3-PBS in a different storage buffer formulation.



Immunofluorescent analysis of (4% PFA) fixed A431 cells using TJP1 antibody (87106-3-RR, Clone: 252301G9) at dilution of 1:500 and CoraLite® 488-Conjugated Goat Anti-Rabbit IgG(H+L) (SA00013-2), CL594-Phalloidin (red). This data was developed using the same antibody clone with 87106-3-PBS in a different storage buffer formulation.



Bi-layer interferometry (BLI) kinetic assays of 87106-3-RR against Human TJP1 were performed. The affinity constant is 29.2 nM.