

For Research Use Only

MUC13 Recombinant monoclonal antibody, PBS Only (Detector)

Catalog Number: 87107-1-PBS



Basic Information

Catalog Number: 87107-1-PBS	GenBank Accession Number: NML_033049.4	Purification Method: Protein A purification
Size: 100ug , Concentration: 1 mg/ml by Nanodrop;	GeneID (NCBI): 56667	CloneNo.: 252211G2
Source: Rabbit	UNIPROT ID: Q9H3R2	
Isotype: IgG	Full Name: mucin 13, cell surface associated	
Immunogen Catalog Number: EG6586	Calculated MW: 55 kDa	

Applications

Tested Applications:
Cytometric bead array, Sandwich ELISA, Indirect ELISA

Species Specificity:
human

Product Information

87107-1-PBS targets MUC13 as part of a matched antibody pair:

MP02867-1: 87107-2-PBS capture and 87107-1-PBS detection (validated in Cytometric bead array)

MP02867-2: 87107-3-PBS capture and 87107-1-PBS detection (validated in Sandwich ELISA)

Unconjugated rabbit recombinant monoclonal antibody in PBS only (BSA and azide free) storage buffer at a concentration of 1 mg/mL, ready for conjugation. Created using Proteintech's proprietary in-house recombinant technology. Recombinant production enables unrivalled batch-to-batch consistency, easy scale-up, and future security of supply.

This conjugation ready format makes antibodies ideal for use in many applications including: ELISAs, multiplex assays requiring matched pairs, mass cytometry, and multiplex imaging applications. Antibody use should be optimized by the end user for each application and assay.

Storage

Storage:
Store at -80°C.
Storage Buffer:
PBS only, pH7.3

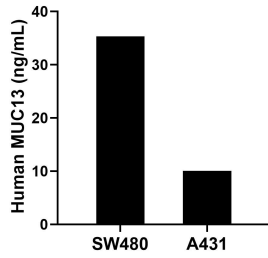
For technical support and original validation data for this product please contact:

T: 1 (888) 4PTGLAB (1-888-478-4522) (toll free in USA), or 1(312) 455-8498 (outside USA)

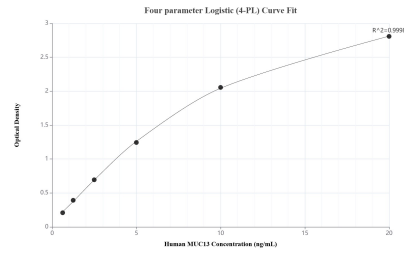
E: proteintech@ptglab.com
W: ptglab.com

This product is exclusively available under Proteintech Group brand and is not available to purchase from any other manufacturer.

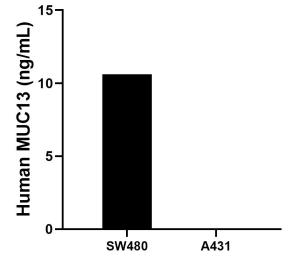
Selected Validation Data



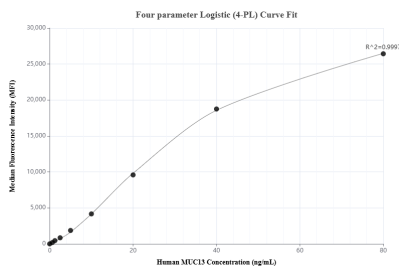
The mean MUC13 concentration was determined to be 35.32 ng/mL in SW480 cell extract based on a 1.20 mg/mL extract load and 10.04 ng/mL in A431 cell extract based on a 1.20 mg/mL extract load.



Sandwich ELISA standard curve of MP02867-2, Human MUC13 Recombinant Matched Antibody Pair - PBS only. 87107-3-PBS was coated to a plate as the capture antibody and incubated with serial dilutions of standard Eg6586. 87107-1-PBS was HRP conjugated as the detection antibody. Range: 0.625-20 ng/mL.



The mean MUC13 concentration was determined to be 10.6 ng/mL in SW480 cell extract based on a 1.2 mg/mL extract load. A431 cell extract were served as a negative control.



Cytometric bead array standard curve of MP02867-1, MUC13 Recombinant Matched Antibody Pair, PBS Only. Capture antibody: 87107-2-PBS. Detection antibody: 87107-1-PBS. Standard: Eg6586. Range: 0.625-80 ng/mL.