

For Research Use Only

MAML1 Recombinant monoclonal antibody

Catalog Number:87111-1-RR



Basic Information

Catalog Number: 87111-1-RR	GenBank Accession Number: NM_014757	Purification Method: Protein A purification
Size: 100ul , Concentration: 1000 µg/ml by Nanodrop;	GeneID (NCBI): 9794	CloneNo.: 252237E6
Source: Rabbit	UNIPROT ID: Q92585	Recommended Dilutions: WB: 1:2000-1:10000
Isotype: IgG	Full Name: mastermind-like 1 (Drosophila)	
	Calculated MW: 108 kDa	
	Observed MW: 108-120 kDa	

Applications

Tested Applications:
WB, ELISA

Species Specificity:
human, mouse

Positive Controls:

WB : HeLa cells, HEK-293 cells, MOLT-4 cells, Jurkat cells, NIH/3T3 cells

Background Information

MAML1, also named as KIAA0200 and Mam-1 , belongs to the mastermind family. It acts as a transcriptional coactivator for NOTCH proteins. MAML1 has been shown to amplify NOTCH-induced transcription of HES1. It enhances phosphorylation and proteolytic turnover of the NOTCH intracellular domain in the nucleus through interaction with CDK8. MAML1 binds to CREBBP/CBP which promotes nucleosome acetylation at NOTCH enhancers and activates transcription. Induces phosphorylation and localization of CREBBP to nuclear foci. It plays a role in hematopoietic development by regulating NOTCH-mediated lymphoid cell fate decisions. This antibody is specific to MAML1. The calculated molecular weight of MAML1 is 108 kDa, but modified MAML1 is about 120 kDa.

Storage

Storage:
Store at -20°C. Stable for one year after shipment.

Storage Buffer:
PBS with 0.02% sodium azide and 50% glycerol, pH7.3

Aliquoting is unnecessary for -20°C storage

*** 20ul sizes contain 0.1% BSA

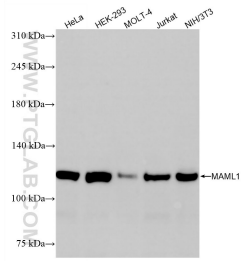
For technical support and original validation data for this product please contact:

T: 1 (888) 4PTGLAB (1-888-478-4522) (toll free in USA), or 1(312) 455-8498 (outside USA)

E: proteintech@ptglab.com
W: ptglab.com

This product is exclusively available under Proteintech Group brand and is not available to purchase from any other manufacturer.

Selected Validation Data



Various lysates were subjected to SDS PAGE followed by western blot with 87111-1-RR (MAML1 antibody) at dilution of 1:5000 incubated at room temperature for 1.5 hours.