

For Research Use Only

# CRHR1 Recombinant monoclonal antibody, PBS Only

Catalog Number: 87114-1-PBS



## Basic Information

<b>Catalog Number:</b> 87114-1-PBS	<b>GenBank Accession Number:</b> NM_004382	<b>Purification Method:</b> Protein A purification
<b>Size:</b> 100ug, Concentration: 1 mg/ml by Nanodrop;	<b>GeneID (NCBI):</b> 1394	<b>CloneNo.:</b> 251134H2
<b>Source:</b> Rabbit	<b>UNIPROT ID:</b> P34998	
<b>Isotype:</b> IgG	<b>Full Name:</b> corticotropin releasing hormone receptor 1	
	<b>Calculated MW:</b> 48 kDa	
	<b>Observed MW:</b> 68 kDa	

## Applications

**Tested Applications:**  
WB, Indirect ELISA

**Species Specificity:**  
human, mouse, rat

## Background Information

Corticotropin-releasing hormone (CRH, also known as Corticotropin-releasing factor, CRF) is a 41 amino acid peptide hormone and a key regulator of the stress response. CRH and the related urocortin peptides (UCN, UCN2 and UCN3) mediate their actions through two mammalian receptor subtypes, CRHR1 and CRHR2 (PMID: 23863939). CRHR1 (also known as CRFR1) exhibits high affinity towards CRH and UCN but low affinity towards UCN2 and no affinity towards UCN3 (PMID: 22684850). The activity of this receptor is mediated by G proteins which activate adenylyl cyclase. Widely distributed throughout the brain, CRHR1 critically controls behavioral adaptation to stress and is causally linked to emotional disorders (PMID: 21885734). Alternative splicing results in multiple transcript variants encoding distinct isoforms of CRHR1. This antibody raised against a synthesized peptide corresponding to amino acid residues 148-165 of isoform CRF-R1 can only recognize isoform CRF-R1.

## Storage

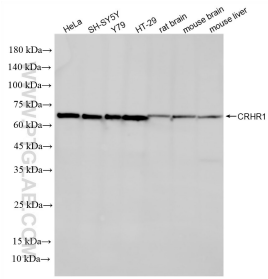
**Storage:**  
Store at -80°C.

**Storage Buffer:**  
PBS only, pH7.3

For technical support and original validation data for this product please contact:  
T: 1 (888) 4PTGLAB (1-888-478-4522) (toll free in USA), or 1(312) 455-8498 (outside USA)      E: proteintech@ptglab.com  
W: ptglab.com

This product is exclusively available under Proteintech Group brand and is not available to purchase from any other manufacturer.

## Selected Validation Data



Various lysates were subjected to SDS PAGE followed by western blot with 87114-1-RR (CRHR1 antibody) at dilution of 1:10000 incubated at room temperature for 1.5 hours. This data was developed using the same antibody clone with 87114-1-PBS in a different storage buffer formulation.